



**24a Clifton Moor, Oakhill, Milton Keynes,
Buckinghamshire, MK5 6FZ**

£435,000 Freehold

- 5 Bedroom home
- Garage With Parking In Front
- Bay Fronted Dining Room
- Spacious Kitchen/Diner And Utility Room
- EPC Rating

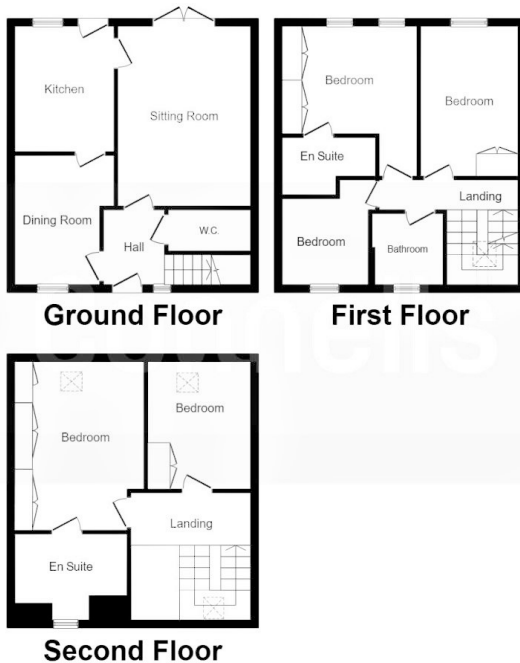




Located in the popular Oakhill area of Milton Keynes is this spacious five bedroom semi detached property which offers flexible accommodation over three floors. Located in a quiet cul-de-sac the property in full comprises: entrance hall, bay fronted dining/room, spacious kitchen/diner, utility room, downstairs cloakroom, spacious first floor lounge, five bedrooms, en-suite to master, family bathroom, excellent size rear garden, single garage with parking in front and generous off road parking to front of property.

Disclaimer

Whilst we have endeavoured to prepare our sales particulars accurately none of the services, appliances or equipment have been tested. A buyer should satisfy themselves on such matters prior to purchase. Any measurements or distances mentioned in these particulars are for guide reference only. If such particulars are fundamental to a purchase, buyers should rely on their own enquiries. All enquiries should be directed to Elevation Estate Agents in the first instance.



This floor plan is for illustrative purposes only. It is not drawn to scale. Any measurements, floor areas (including any total floor area), openings and orientation are approximate. No details are guaranteed, they cannot be relied upon for any purpose and they do not form part of any agreement. No liability is taken for any error, omission or misstatement. A party must rely upon its own inspection(s). Plan produced for Connells, Powered by www.focalagent.com