



SOUTHCOTE ROAD, MERSTHAM, SURREY RH1

HOUND & PORTER
FIND A HOUSE . MAKE IT HOME

SOUTHCOTE ROAD, MERSTHAM, SURREY RH1



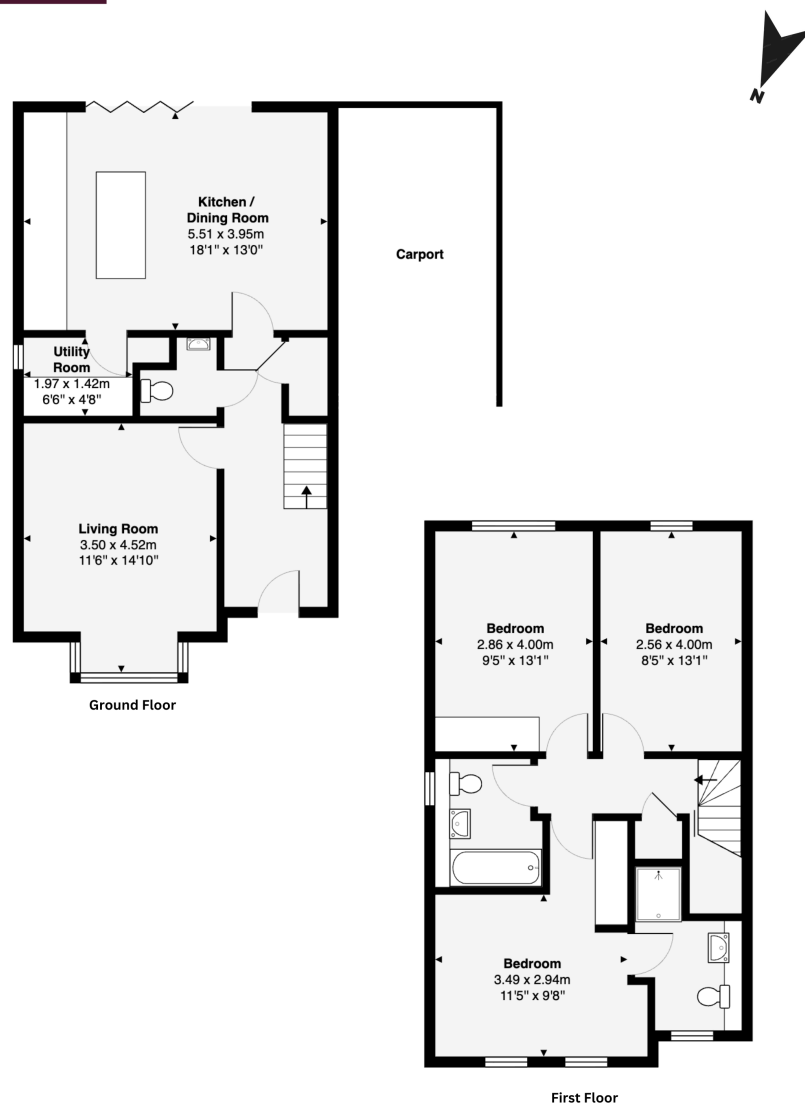
- Three great double bedrooms
- Master with en-suite
- Fabulous kitchen/dining room
- Luxurious family bathroom suite
- Wonderful sunny garden
- Gated private drive for two cars
- Great location for Merstham station
- Bright and airy living room
- Perfect for excellent schools

SOUTHCOTE ROAD, MERSTHAM, SURREY RH1



Southcote Road, RH1

Total Area: 123 sqft / 1339 m2



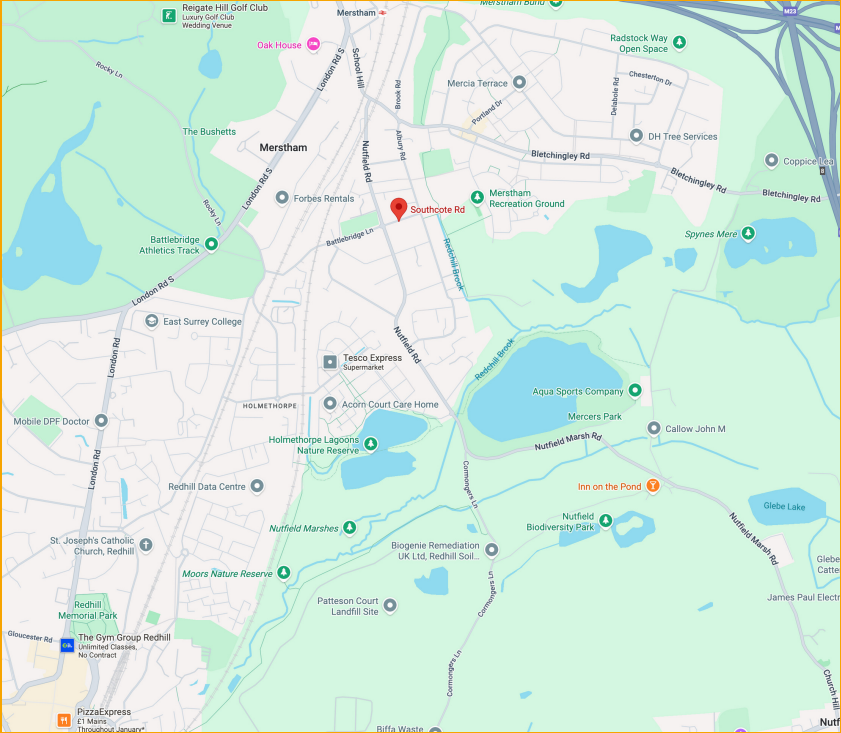
It is an absolute pleasure to bring this fantastic three double bedroom detached modern home to the market, presented in immaculate order throughout. The kitchen/dining room is the real hub of this home with a range of "Shaker" style units, ample quartz worksurface and a central monolith island with five ringed gas hob. There is an integrated oven, combination microwave and the white goods are tucked away in the utility room. With plenty of space for a family table and recently fitted bi-fold doors this really is a beautiful room.

The living room is of a good size and there is a handy downstairs WC. Off an ample landing are three great size bedrooms and a luxury family bathroom, the master bedroom has a wonderful ensuite. With a fabulous sunny garden, plenty of gated parking with private drive, this truly is a home not to be missed.

Disclaimer: This floor plan has been produced by Lock and Key Media. All measurements are approximate and no responsibility is taken for any errors. For illustration purposes only.



SOUTHCOTE ROAD, MERSTHAM, SURREY RH1



LOCATION

Location is always key and this fantastic home is no exception, South Merstham is a quiet and peaceful place to live, with the practicality and convenience of excellent transport links. There are also lovely walks, being close to the nature reserve and Nutfield Marsh, as well as to a great local pub overlooking the cricket green.

TRANSPORT

Within easy reach of the, A25, M23, M25 and Gatwick Airport
A bus service providing access to Redhill, Reigate and Gatwick

DISTANCE TO STATIONS FROM PROPERTY BY ROAD

- 0.7 miles to Merstham station
- 1.6 miles to Redhill station



DID YOU LIKE WHAT YOU’VE JUST SEEN?

Get in touch. We are more than happy to arrange a viewing, assist you with the complicated paperwork and find you the best local businesses to help during and after your move. We look forward to hearing from you.

58 Castle Walk
Reigate, Surrey
RH2 9PX

01737 317880
hello@houndandporter.co.uk