



**34 Opal House, Vizion, 4 Merrivale Mews,  
Milton Keynes, Buckinghamshire, MK9 2EL**

**£1,450 pcm Not Applicable**

- Vizion development
- Two bedroom apartment
- Stylish fitted kitchen
- En suite and bathroom
- Balcony accessed from the living room
- Secure allocated underground parking
- City Centre Living
- 64 Sq Metres
- EPC Rating B





### Bedroom 1

3.69m x 2.84m (12' 1" x 9' 4")

### Bedroom 2

4.06m x 2.74m (13' 4" x 9' 0")

### Living Room

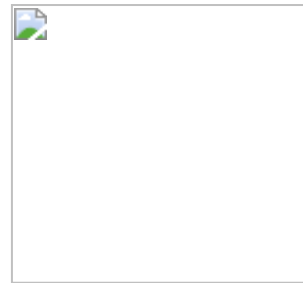
4.83m x 3.47m (15' 10" x 11' 5")

### Kitchen

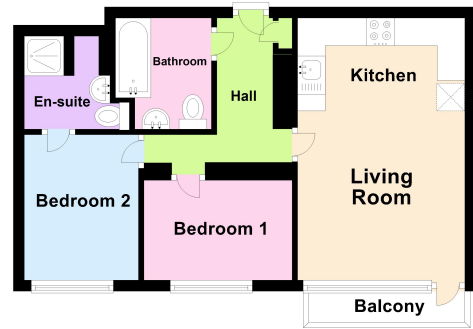
3.46m x 2.02m (11' 4" x 6' 8")

### Disclaimer

Whilst we have endeavoured to prepare our sales particulars accurately none of the services, appliances or equipment have been tested. A buyer should satisfy themselves on such matters prior to purchase. Any measurements or distances mentioned in these particulars are for guide reference only. If such particulars are fundamental to a purchase, buyers should rely on their own enquiries. All enquiries should be directed to Elevation Estate Agents in the first instance.



Floor Plan



Floor plans are for layout purposes only. Measurements are approximate and subject to inaccuracies  
Plan produced using PlanUp.