

**1 Meadow Bank Apartments, Les Charrieres Malorey, St
Lawrence, Jersey, Channel Islands. JE3 1FU**

£450,000 Flying Freehold

REDUCED



PROPERTY DESCRIPTION

Situated in a quiet and small development of similar sized yet all unique apartments, this ground floor one bedroom property is really something special benefiting from a large decked sunny terrace with stunning treetop views, an additional small private garden; parking for 1 plus ample visitor spaces, a large secure store cupboard and bike storage. Internally this home is in fantastic condition, briefly comprising of an open plan lounge/kitchen/diner; a double bedroom with fitted wardrobes and an en-suite bathroom. If you are looking for a quality home in a peaceful leafy area, yet close to a good bus route, and 5 mins to the beach, 10 mins to town make sure you book a viewing now. SOLE AGENT.

FEATURES

- 1 bed ground floor terrace apartment
- Large terrace & private garden
- Stunning tree top views
- Picturesque & peaceful location
- Parking for 1 + visitor spaces + store cupboard
- Small select development



ROOM DESCRIPTIONS

SERVICE CHARGE

Service Charge

Service charge is £152.10 which includes repairs & maintenance; cleaning; drain maintenance; water rates; communal lighting; oil heating; boiler maintenance; gardener; management fee; building insurance; sinking fund & bank charges.

Directions

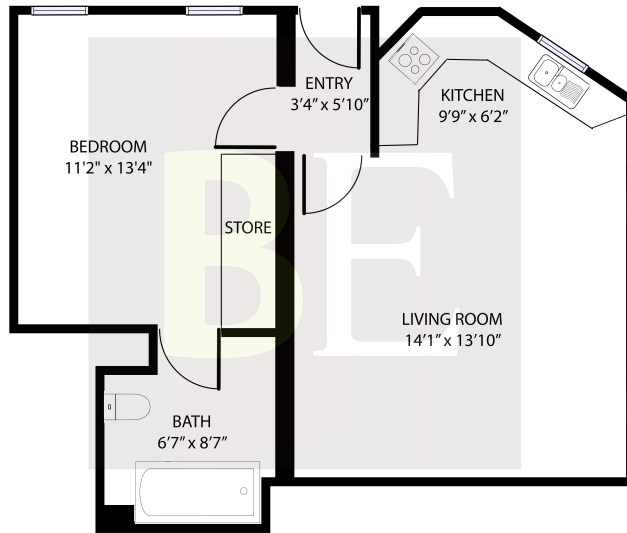
From Sandybrook head for The War Tunnels. Just before the War Tunnels either park in the 12hr free parking or drive up Les Charrieres Malorey and through the pillars.
<https://w3w.co/kebabs.untrained.arrangement>







FLOORPLAN



GROSS INTERNAL AREA
FLOOR 1: 477 sq. ft
TOTAL 477 sq. ft

SIZES AND DIMENSIONS ARE APPROXIMATE, ACTUAL MAY VARY