

Longridge Way, Weston Village, Weston-Super-Mare, Somerset.

BS24 7HR

£190,000 Leasehold

FOR SALE



HOUSE FOX
ESTATE AGENTS

www.housefox.co.uk

01934 314242
01275 404601
01278 557700
sales@housefox.co.uk

PROPERTY DESCRIPTION

HOUSE FOX ESTATE AGENTS PRESENTS.....A coach house with its own private entrance, set back from the road and offered for sale with no onward chain.

The main front door gives you your own private access to the hallway, with stairs leading up to the living accommodation that comprises landing with loft access, cupboard and airing cupboard, a lovely size lounge/diner with archway to the kitchen a great place to entertain family and friends, 2 bedrooms, bathroom, plus gas central heating, double glazing, and a garage.

The property offers great size accommodation and with no chain complications, you can move very quickly and being a blank canvas you can add your own ideas, on decor and style

FEATURES

- WALK THROUGH 360 VIDEO TOUR AVAILABLE
- Coach house
- 2 bedrooms
- Good size lounge/diner
- No onward chain
- Gas central heating
- Garage
- EPC-D



ROOM DESCRIPTIONS

Main front door to the hallway:

Hallway:

Stairs to the first floor

Landing:

Loft access, airing cupboard, cupboard

Lounge/diner:

5.45m x 5m (17' 11" x 16' 5") L-SHAPED....Double glazed windows to the front and rear, 2 radiators, archway to the kitchen

Kitchen:

2.98m x 2.30m (9' 9" x 7' 7") Sink unit, floor and wall units, built in oven, hob and extractor hood, double glazed window, plumbing for washing machine, radiator

Bedroom 1:

3.48m x 3.21m (11' 5" x 10' 6") Radiator, double glazed window

Bedroom 2:

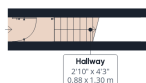
3.48m x 3.21m (11' 5" x 10' 6") Radiator, double glazed window

Bathroom:

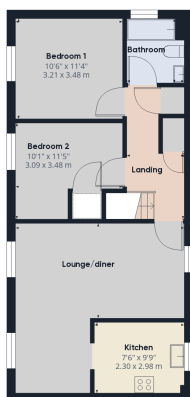
Bath, wash hand basin, WC, double glazed window



FLOORPLAN & EPC



Floor 0



Floor 1

Approximate total area^m
687.6 ft²
63.88 m²

(1) Excluding balconies and terraces

While every attempt has been made to ensure accuracy, all measurements are approximate, not to scale. This floor plan is for illustrative purposes only.

Calculations are based on RICS IPMS 3C standard.

GIRAFFE360

