



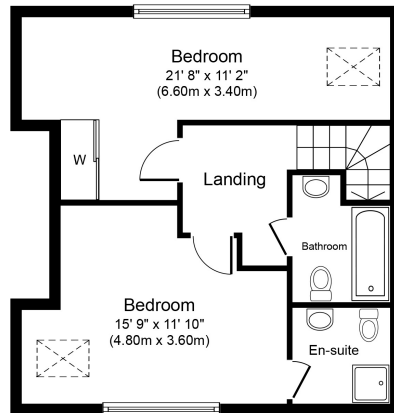
Old School Mews, Staines-upon-Thames, Surrey, TW18

3HX

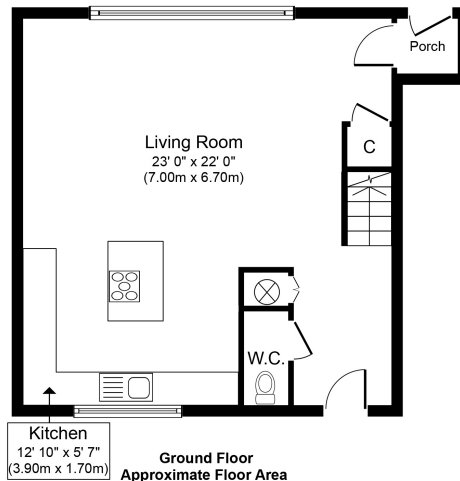
STUNNING TWO BEDROOM, TWO BATHROOM MEWS HOUSE SITUATED IN THIS CHARMING CONVERTED SCHOOL GATED DEVELOPMENT IDEALLY LOCATED FOR BOTH EGHAM & STAINES TOWN CENTRES & LOCAL MOTORWAY NETWORKS. The property enjoys character features throughout and benefits from a spacious lounge/diner open to modern fitted kitchen, downstairs W.C, two double bedrooms (en-suite to Bedroom 1), further modern white bathroom suite, allocated parking and well-kept communal gardens. Share of Freehold. Viewings Highly Recommended!

ROOM DESCRIPTIONS

FLOORPLAN



First Floor
Approximate Floor Area
516 sq. ft.
(48.0 sq. m.)



Ground Floor
Approximate Floor Area
567 sq. ft.
(52.7 sq. m.)

Whilst every attempt has been made to ensure the accuracy of the floor plan contained here, measurements of doors, windows, rooms and any other items are approximate and no responsibility is taken for any error, omission, or mis-statement. The measurements should not be relied upon for valuation, transaction and/or funding purposes. This plan is for illustrative purposes only and should be used as such by any prospective purchaser or tenant. The services, systems and appliances shown have not been tested and no guarantee as to their operability or efficiency can be given.
Copyright V360 Ltd 2024 | www.houseviz.com