

FOR SALE

£210,000 Freehold



6 Newgate Street, WALTON ON THE NAZE, Essex. CO14 8DT

- End Terraced Town House
- Three Bedrooms
- No Onward Chain - Keys To View
- Courtyard Garden
- Close To Beach, Town & Mainline Train Station
- Roof Terrace



PROPERTY DESCRIPTION

Situated just a stone's throw from the beach and Walton's vibrant local amenities, My Moving Places is delighted to present this three-bedroom end-terraced house, offered with no onward chain. The accommodation is arranged over three floors, with the ground floor comprising a welcoming lounge, separate dining area, and rear-facing kitchen. On the first floor there are two bedrooms, one of which gives access to a private roof terrace, along with the family bathroom. The second floor is dedicated to the spacious master bedroom. Externally, the property benefits from a rear courtyard garden, while its prime central location makes it ideal for those wishing to enjoy coastal living with shops, cafes, and the seafront all within easy reach.



ROOM DESCRIPTIONS

GROUND FLOOR

Entrance Hall

Steps up leading to an obscured half glazed entrance door leading to entrance hall, laminate flooring, radiator, double doors leading to Dining area, stairs leading to first and second floor landings.

Lounge

13' into bay x 11' 8" (3.96m x 3.56m) Double glazed bay window to front aspect, laminate flooring, radiator, fireplace with wooden surround. Archway leading to Dining Area.

Dining Area

9' 11" x 9' 4" (3.02m x 2.84m) Double glazed window to side aspect, laminate flooring, radiator. Archway leading to Lounge, further smaller archway leading to Kitchen/Diner.

Kitchen/Diner

15' 4" x 14' 2" narrowing to 10'6" (4.67m x 4.32m) Fitted with a range of white base units, drawers and matching eye level cabinets, roll edge work surfaces inset a stainless steel sink and drainer unit. UPVC double glazed door to rear, two double glazed windows to rear aspect, tiled floor.

FIRST FLOOR

Landing

Radiator, doors leading to Bedrooms Two and Three, door to Bathroom. Stairs leading to second floor landing.

Bedroom Two

14' 5" x 10' 10" (4.39m x 3.30m) Two double glazed windows to front aspect, radiator, fitted wardrobes.

Bedroom Three

9' 1" x 8' 9" (2.77m x 2.67m) Double glazed door leading to roof terrace, radiator, cupboard housing wall mounted boiler and hot water tank.

Roof Terrace

Retained by a brick wall.

Bathroom

Suite comprising low level WC, pedestal wash hand basin and panelled bath. Obscure double glazed window to side aspect, tiled flooring, radiator, airing cupboard, access to loft.

SECOND FLOOR

Landing

Radiator, Door to Bedroom One.

Bedroom One

16' 2" narrowing to 10'11" x 15' 6" (4.93m x 4.72m) Double glazed window to front, fitted carpet, radiator, eaves storage.

EXTERIOR

Garden

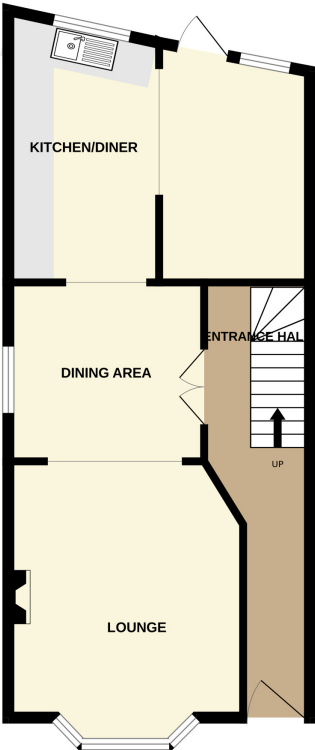
Courtyard style rear garden with fencing to both sides, an outside tap and access to the front via a side gate.



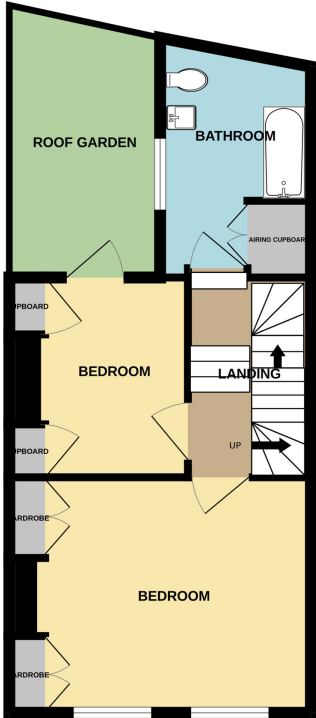
FLOORPLAN & EPC



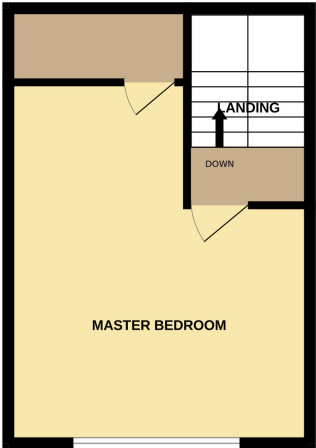
GROUND FLOOR



1ST FLOOR

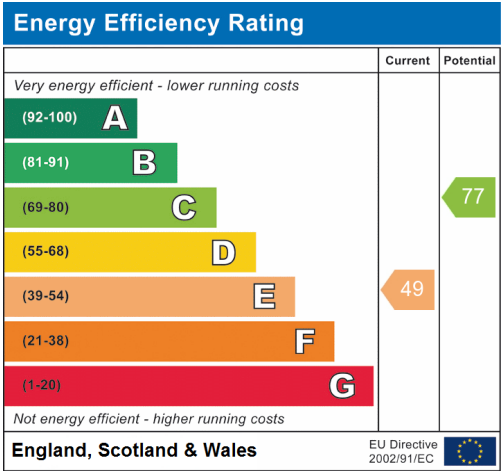


2ND FLOOR



NEWGATE STREET

Whilst every attempt has been made to ensure the accuracy of the floorplan contained here, measurements of doors, windows, rooms and any other items are approximate and no responsibility is taken for any error, omission or mis-statement. This plan is for illustrative purposes only and should be used as such by any prospective purchaser. The services, systems and appliances shown have not been tested and no guarantee as to their operability or efficiency can be given.
Made with Metropix ©2023



Frinton-On-Sea
148, Pole Barn Lane, Frinton-on-Sea, CO13 9NG
01255 852929
sales@mymovingplaces.com