

FOR SALE

£240,000 Freehold



19a Meadows Close, Poole, Dorset. BH16 5JQ

- Two Double Bedrooms
- End of Terrace House
- Cul-de-Sac Location
- Modern Kitchen & Shower Room
- Extraordinary Large Garden
- Ideal First Time Buy or Buy to Let Investment



PROPERTY DESCRIPTION

Mursells Estate Agents are pleased to offer for sale this modern end of terrace house with two double bedrooms having a 'much larger than average' garden located in a quiet cul-de-sac location in Upton, near Poole, close to local amenities and the popular Upton Country Park.

The kitchen/breakfast room has a range of modern shaker style wall and base units offering ample storage, together with spaces for freestanding appliances. There is space for dining table and chairs and also a useful, large understairs cupboard. A light and spacious living room is to the front of the house, neutrally decorated and with stairs rising to the first floor.

Upstairs both bedrooms are double rooms. The shower room is fitted with a modern white suite comprising shower cubicle, w.c. and wash hand basin.

Outside, the garden to the side and rear of the house measures approximately 90' x 40', offering endless opportunities for the keen gardener or grow your own enthusiast. Alternatively, it would make the perfect space for entertaining/outdoor dining/relaxing whilst watching the children enjoy themselves in their own outdoor playground.

This modern, neutrally decorated property would make a fantastic starter home or buy to let investment. Don't miss the opportunity of making this wonderful house your home, book your appointment to view internally by contacting Mursells Estate Agents today!

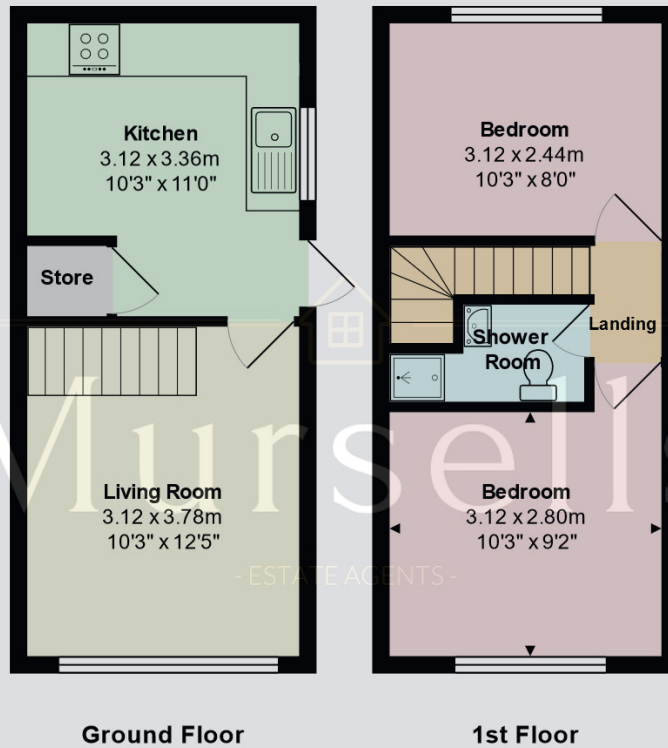


ROOM DESCRIPTIONS



FLOORPLAN

Mursells



Total Area: 45.0 m² ... 484 ft²

All measurements are approximate and for display purposes only

Mursells Estate Agents
8a, High Street, Lychett Matravers, BH16 6BQ
01202 018811
info@mursells.co.uk