



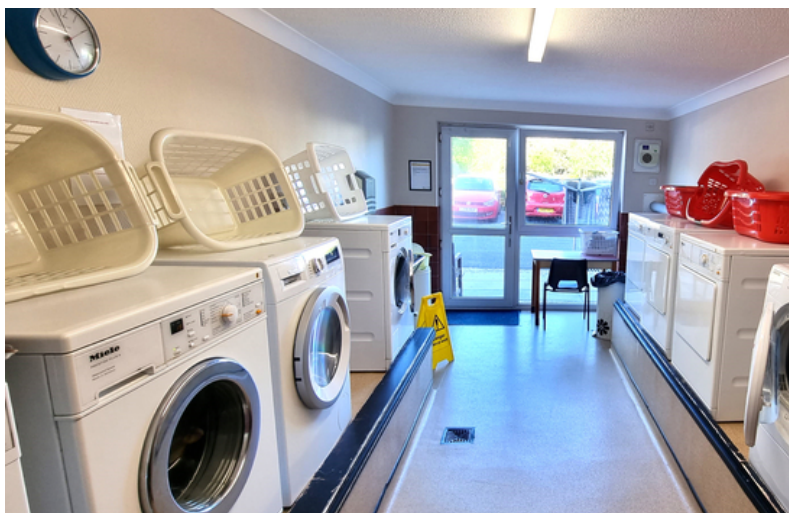
Flat 10 Homelawn House Brookfield Road,  
Bexhill-on-Sea, East Sussex, TN40 1PN

**£149,950**

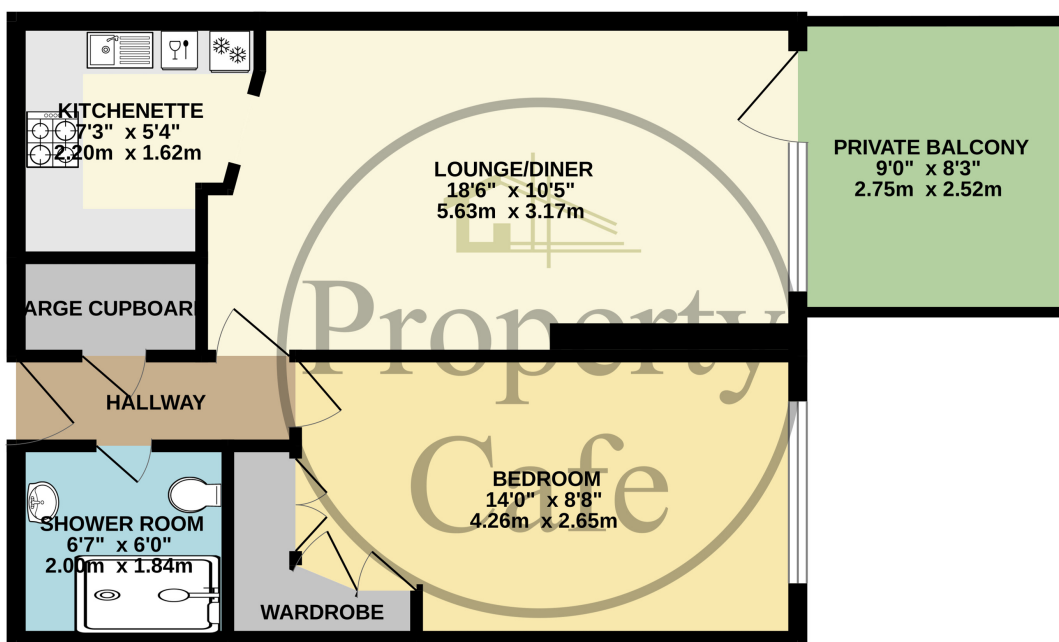


- Immaculate One Bedroom Retirement Flat
- Ground Floor With Own Entrance
- Lounge-Diner With Access Out To The Patio
- Spacious Double Bedroom With Wardrobes
- Modern Fitted 'Kitchenette'
- (Kitchen Appliances To Remain)
- 24Hr Life Line Alarm Pulls
- Excellent Communal Facilities
- Secure Development With House Manger
- Guest Flat Available For Family & Friends
- Security Entry Phone System
- Mobility Vehicle Electric Points
- Residents Lounge/Function Suite
- Immaculate Communal Grounds
- Located Adjacent To The Seafront
- Excellent Bus Service Into Town
- Sold With No Onward Chain





**GROUND FLOOR**  
460 sq.ft. (42.7 sq.m.) approx.



TOTAL FLOOR AREA : 460 sq.ft. (42.7 sq.m.) approx.

Whilst every attempt has been made to ensure the accuracy of the floorplan contained here, measurements of doors, windows, rooms and any other items are approximate and no responsibility is taken for any error, omission or mis-statement. This plan is for illustrative purposes only and should be used as such by any prospective purchaser. The services, systems and appliances shown have not been tested and no guarantee as to their operability or efficiency can be given.  
Made with Metroplex ©2023

