

PAUL ALEXANDER
MORTGAGE CONSULTANTS

For all insurance and mortgage needs,
please call Paul Alexander Mortgage Consultants
on 020 8997 3915

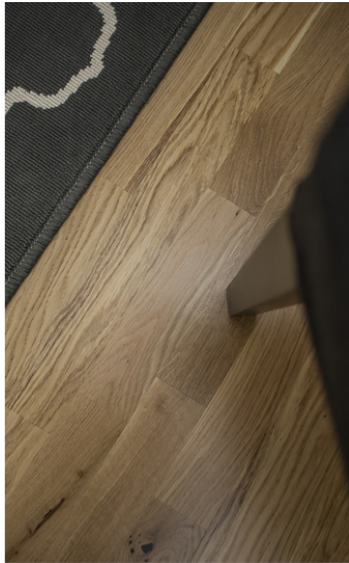
LONDON'S LOCAL AGENT
enquiries@orchardsoflondon.com
020 3962 6000 | orchardsoflondon.com
Westworld West Gate London W5 1DT

4 WARPLE WAY

£1,350 pcm

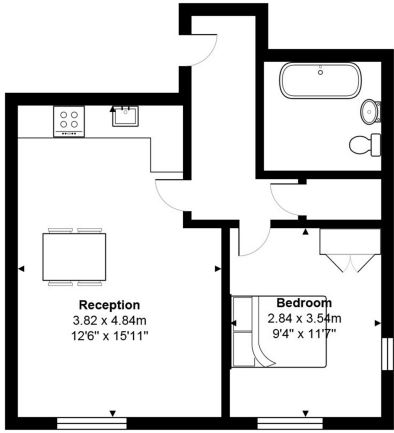
- One spacious double bedroom
- Available now
- New fantastic development
- Spacious and bright living accommodation throughout
- Ample storage opportunities
- Close to public transports
- Wooden flooring
- An array of charming features throughout
- Fully integrated modern kitchen
- Furnished/ Unfurnished

LONDON'S LOCAL AGENT
enquiries@orchardsoflondon.com
020 3962 6000 | orchardsoflondon.com
Westworld West Gate London W5 1DT



A fantastic opportunity to live in a spacious, newly renovated one bedroom apartment set in a dynamic residential development in the heart of Acton. This stunning property boasts a spacious and bright reception room that merges into the modern integrated kitchen area. Furthermore there is a vast double bedroom with fitted wardrobes. The Tech West development features contemporary layouts with characterful features retained from the original warehouse conversion such as open plan design, exposed brickwork, steel columns and beams. This one bedroom apartment is finished to the highest specification with a spacious kitchen, a bright and elegant bathroom and stylish, modern open plan living areas in which you can relax and entertain. Tech West Lofts is conveniently

located to take advantage of the rest of London, with a myriad of transport options in walking distance of the development. One spacious double bedroom Luxurious bathroom New fantastic development Spacious and bright living accommodation throughout Ample storage opportunities Close to public transports Wooden flooring An array of charming features throughout Fully integrated modern kitchen Furnished/unfurnished.



Total Area: 51.0 m² ... 549 ft²
All measurements are approximate and for display purposes only

