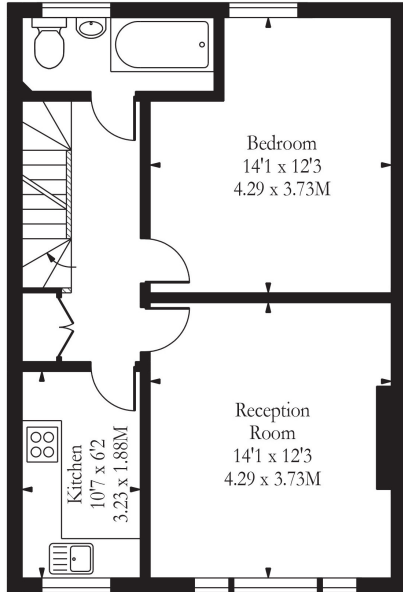


Galloway Road, Shepherd's Bush, W12
Flat | 3 bedrooms | Shepherd's Bush
To Let £575 p/w

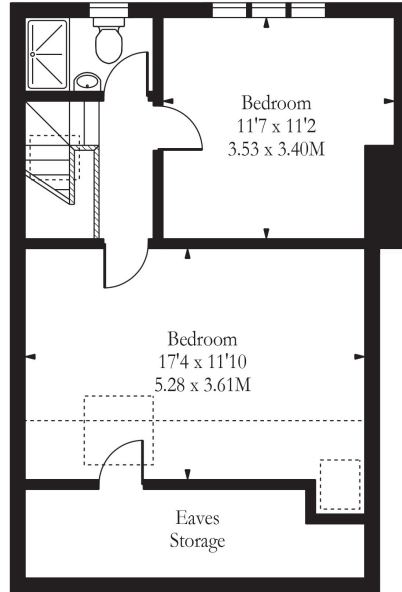
**horton
andgarton**



Galloway Road, W12



First Floor



Second Floor

Approx Gross Internal Area 1076 Sq Ft - 99.96 Sq M

(Including Restricted Height Area & Eaves Storage)

Approx Gross Internal Area 1076 Sq Ft - 99.96 Sq M

Illustration Purposes Only

Whilst every attempt has been made to ensure the accuracy of the floor plan contained here, measurements of doors, windows, rooms and any other items are approximate and no responsibility is taken for any errors, omissions or mis-statements. The plan is for illustrative purposes only, is not to scale and should be used as such by any prospective purchaser.



Three double bedrooms | Two bathrooms | Furnished | Split level maisonette | EPC rating D | Shepherd's Bush

Our membership of the Association of Residential Letting Agents (ARLA), National Association of Estate Agents (NAEA), the National Federation of Property Professionals (NFOPP), and the Property Ombudsman Scheme - Sales and Lettings, act as a guarantee to our customers of our rigorous standards.

