



## Mount Grace Road, Potters Bar, Hertfordshire, EN6 1QY

**£1,225,000**

- CHAIN FREE
- CORNER STYLE HOME
- SEPARATE UTILITY ROOM
- FOUR DOUBLE BEDROOMS
- TWO BATHROOMS
- SOUGHT AFTER RESIDENTIAL LOCATION
- CORNER PLOT
- OPEN PLAN KITCHEN BREAKFAST ROOM
- DOWNSTAIRS WC
- STUDY / SINGLE BEDROOM
- GOOD DECORATIVE ORDER THROUGHOUT

108, High Street, Potters Bar, EN6 5AT

01707 245 555

[www.home-counties.com](http://www.home-counties.com)

# Mount Grace Road, Potters Bar, Hertfordshire, . EN6 1QY

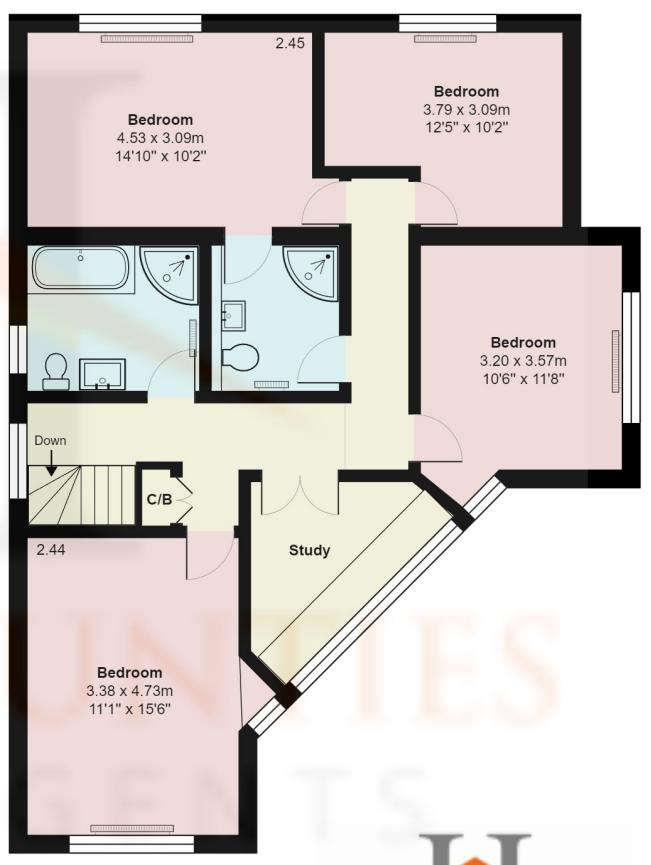
## £1,225,000 Freehold

CHAIN FREE

Situated on the corner of two of Potters Bar's most sought after roads is this delightful Corner style detached family home.

The home features a large entrance hall with cloakroom and downstairs WC. It has a large lounge, family room, and an open plan kitchen with dining and sitting area, plus separate utility room and garage / workshop.

The first floor benefits from four double bedrooms, a family bathroom, plus a recently remodelled en-suite 'Jack & Jill' shower room, and a study with views over the front aspect. Externally the home has a wrap around garden, off street parking for two cars with potential for a larger driveway



### Mount Grace Road, Hertfordshire EN6

Total Area: 212.2 m<sup>2</sup> ... 2284 ft<sup>2</sup>  
All measurements are approximate and for display purposes only

