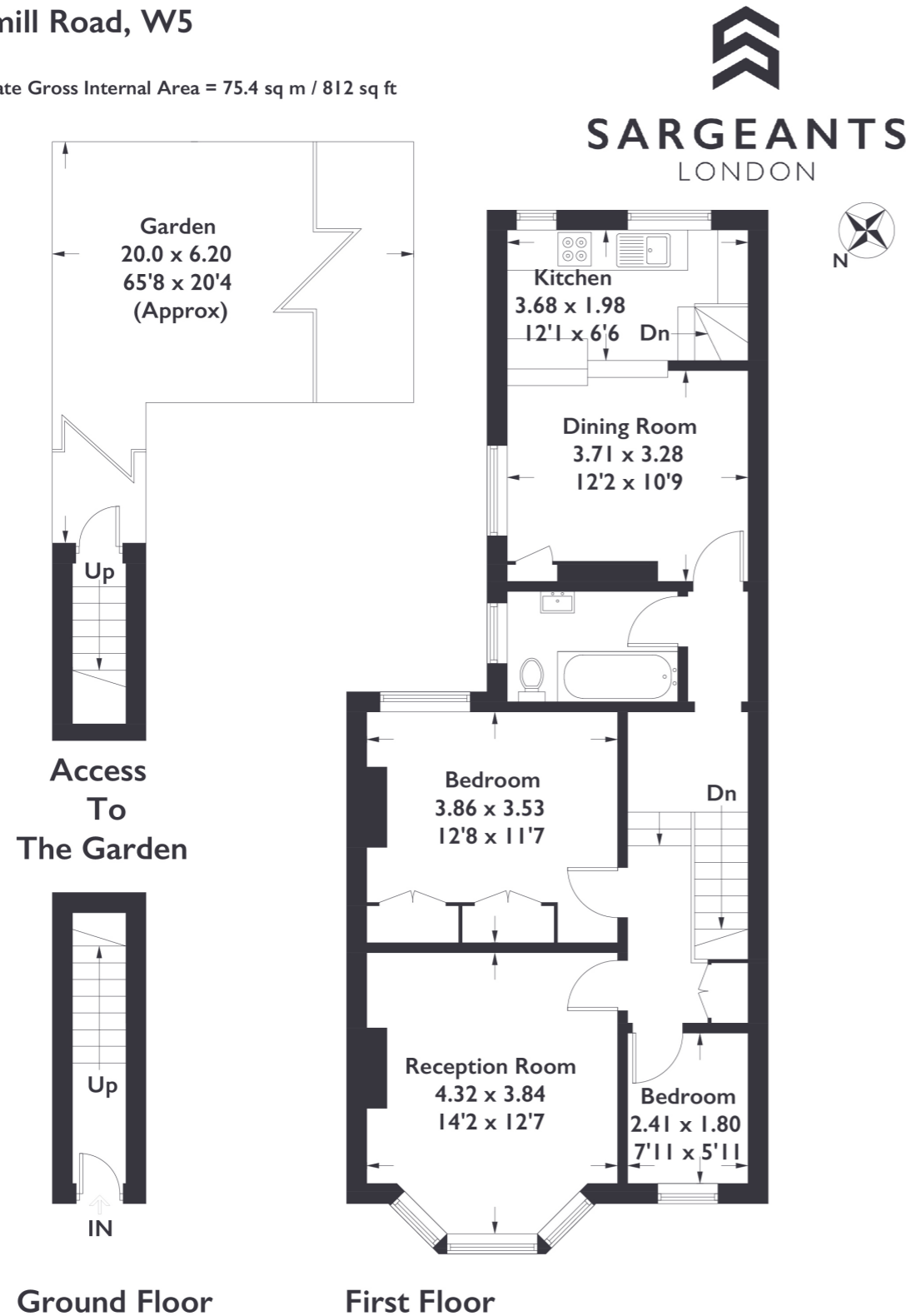


**Windmill Road, W5**

Approximate Gross Internal Area = 75.4 sq m / 812 sq ft



Measured in accordance with RICS Code of Measuring Practice. To be used for identification and guidance purposes only. Whilst every care is taken in the preparation of this plan, please check all dimensions, shapes and compass bearings before making any decisions reliant upon them. www.london58.com © 2023 hello@london58.com



**2 BEDROOM FLAT**

**Windmill Road, W5**

£500,000

Welcome to this charming first-floor Edwardian conversion flat, where classic elegance meets modern comfort. As you step into the hallway and ascend the stairs, you're greeted by a spacious and inviting open-plan kitchen dining area. An adjacent set of stairs leads to an expansive garden, featuring a tasteful concrete-tiled seating area, offering an idyllic spot for outdoor relaxation.

**FEATURES**

- Leasehold
- Two Bedrooms
- One Bathroom
- Large Garden
- On-Street Parking
- Northfields Station
- Brentford Station
- Mount Carmel Catholic Primary School
- EPC Rating E



2 BEDROOM FLAT

## Windmill Road, W5

£500,000

The apartment exudes a contemporary flair while retaining the grandeur of its Edwardian heritage, with high ceilings that add an air of openness.

The flat includes a generously sized double bedroom with a large amount of room for storage as well as a cosy single room, offering flexibility and abundant space.

The focal point of this residence is the reception space, adorned with original bay windows that infuse the room with natural radiance. A captivating fireplace exudes charm, establishing a warm and inviting focal point. The interior showcases a seamless blend of form and function, contemporary finishes, and innovative design. Situated in proximity to Northfield Avenue's amenities, you'll have essentials and leisure options a 10 minute walk away. Moreover, the strategic location of the property ensures swift access to the Great West Road, facilitating seamless transportation options for your daily commute. EPC Rating E.

