



355 Convent Way
Southall, UB2 5UN



Telephone: 02085707900

Email: info@blueestateagents.co.uk



Blue Estate Agents
.co.uk

Convent Way

Southall, UB2 5UN

This spacious and well-presented three-bedroom ground floor flat is ideally located in a popular and family-friendly area of Southall. Offering generous internal space, excellent natural lighting, and convenient access to local amenities, this property is perfectly suited for families, first-time buyers or for an investment opportunity.

Upon entering the flat, you are welcomed into a bright and spacious hallway with ample built-in storage and tiled flooring. The flat features two large double bedrooms, both well-proportioned and filled with natural light, providing a comfortable and relaxing environment. In addition, there is a good-sized single bedroom which can easily serve as an office space or child's room.

The living areas are thoughtfully arranged to maximise space and light, with large windows throughout the flat creating a bright and airy atmosphere. The separate kitchen is practical and functional, offering plenty of workspace. The main bathroom is clean, modern, and well-maintained, featuring a full suite ideal for family living.

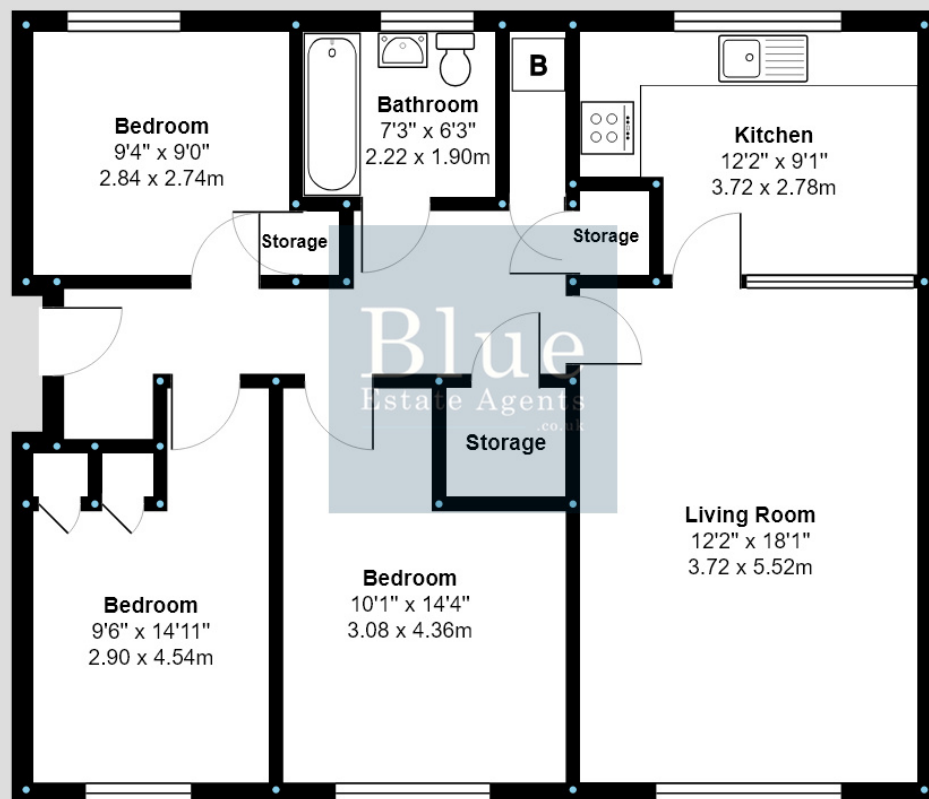
One of the standout features of this property is the abundance of storage available,



Blue Estate Agents
.co.uk



Blue Estate Agents
co.uk



Ground Floor

Total Area: 865 ft² ... 80.3 m²

All measurements are approximate and for display purposes only.

Blue
Estate Agents
co.uk

Blue Estate Agents
315 Vicarage Farm Road, Hounslow
Greater London
TW5 0DR
02085707900
info@blueestateagents.co.uk