



Thie-Ny-Dreem, Laxey, Isle of Man. IM4 7PW

Manxmove Estate Agents are delighted to present Thie-Ny-Dhreem, a beautifully extended Manx cottage nestled on a meticulously maintained one-acre plot with uninterrupted sea views. This charming property offers a perfect blend of traditional character and modern convenience, making it an ideal family home.



£649,950 Freehold

PROPERTY DESCRIPTION

Manxmove Estate Agents are delighted to present Thie-Ny-Dhreem, a beautifully extended Manx cottage nestled on a meticulously maintained one-acre plot with un-interrupted sea views. This charming property offers a perfect blend of traditional character and modern convenience, making it an ideal family home.

Key Features:

Original Charm - The cottage retains its original two reception rooms, one featuring a cozy cast iron multi-fuel burner, perfect for those chilly evenings. These spaces offer a warm and inviting atmosphere for relaxation and entertaining.

Modern Extension: Transitioning into the extended part of the home, you'll find a spacious dining room bathed in natural light, thanks to the south-facing French doors that open up to the garden and gable end windows providing stunning sea views. The well-appointed kitchen, utility room, and a convenient shower room complete this functional living space.

Accommodating Bedrooms: Upstairs, the property boasts four generously sized bedrooms, all of which have impressive sea views. The master suite includes an en suite shower room, providing a private retreat. A family bathroom serves the additional bedrooms, ensuring ample space for everyone.

Garage and Parking: The exterior features a detached double garage (which could be further developed subject to permissions) and a substantial block-paved driveway, providing plenty of parking.

Landscaping: The landscaped gardens offer a tranquil setting to enjoy the stunning views Easterly views towards The Cumbrian Mountains and Southerly aspect towards Laxey and Clay Head. The current owners have taken great pride in the upkeep of the grounds, ensuring that the grass is lush and vibrant, perfect for outdoor activities, gardening, or simply enjoying the serene surroundings.

Privacy: This property offers a rare sense of privacy, allowing you to immerse yourself in the natural landscape without interruption. The expansive space provides ample room for a variety of outdoor pursuits, whether it's hosting family gatherings, creating a garden oasis, or simply relaxing in the peaceful environment.

FEATURES

- Immaculate Detached Family Home
- Stunning Sea and Rural Views
- Highly Desirable Location in Laxey
- 4 Generous Reception Rooms
- 4 Bedrooms (1 En Suite) plus Bathroom
- Detached Double Garage
- Superb 1 Acre Plot
- No Onward Chain



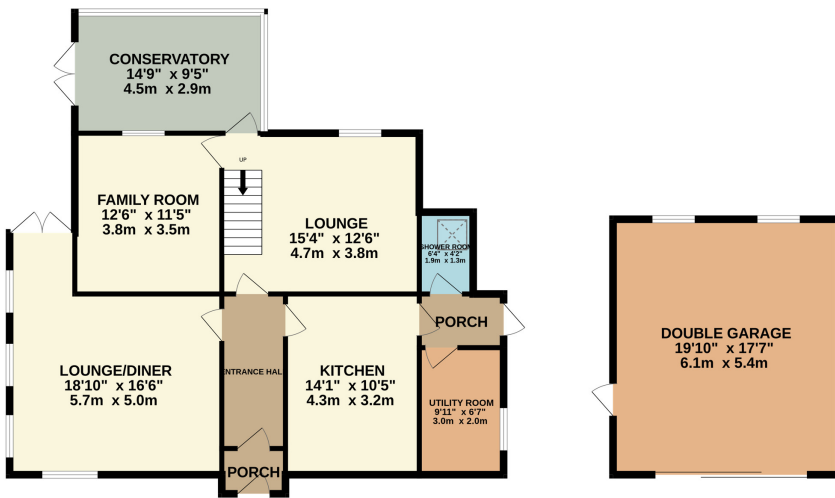
Property Images



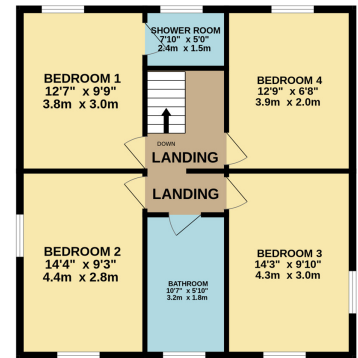
FLOORPLAN



GROUND FLOOR
1419 sq.ft. (131.9 sq.m.) approx.



1ST FLOOR
695 sq.ft. (64.6 sq.m.) approx.



TOTAL FLOOR AREA : 2115 sq.ft. (196.5 sq.m.) approx.

Whilst every attempt has been made to ensure the accuracy of the floorplan contained here, measurements of doors, windows, rooms and any other items are approximate and no responsibility is taken for any error, omission or mis-statement. This plan is for illustrative purposes only and should be used as such by any prospective purchaser. The services, systems and appliances shown have not been tested and no guarantee as to their operability or efficiency can be given.

Made with Metropix ©2025

DISCLAIMER: Whilst Manxmove Ltd believe that these details are correct, neither Manxmove Ltd or their clients guarantee their accuracy in any way. Consequently, these details are not to be used to form part of any legally binding contract. Prospective purchasers or tenants are advised to visit this property to satisfy themselves as to the correctness of these details. Please note, we use wide angle camera lenses in order to show as much of each room as possible. This is not intended to mislead any prospective purchasers or tenants in any way and an honest verbal description is always available prior to viewing if required.