

# 23a King Street,

Frome, BA11 1BH

COOPER  
AND  
TANNER



£165,000 Leasehold

2 1 1 EPC D

## Description

Set in the heart of Frome Town Centre, this light and airy first floor flat forms part of this attractive Grade II listed building, offered for sale with no onward chain.

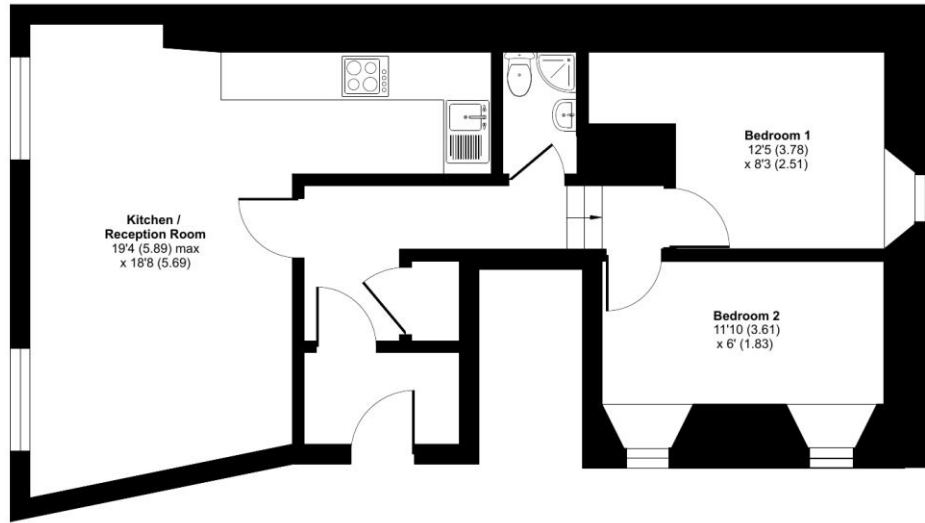
To the front of the property there is a very large, open planned kitchen/dining/living area which provides lots of space for furniture, a range of wall and base units and room for appliances. Two attractive sash windows fill the space with natural light and enjoy views over King Street. To the rear there are two well-proportioned bedrooms and a shower room.

This increasingly rare opportunity would make an excellent first time buy and would make an equally good buy to let investment.

## King Street, Frome, BA11

Approximate Area = 553 sq ft / 51.3 sq m

For identification only - Not to scale



FIRST FLOOR



Floor plan produced in accordance with RICS Property Measurement Standards incorporating International Property Measurement Standards (IPMS2 Residential). © richcom 2023. Produced for Cooper and Tanner. REF: 959371



### Features

- A character property
- Kitchen with integrated appliances
- Shower room with walk-in shower
- Wonderful two-bedroom maisonette
- Light and airy accommodation
- Central location
- Management £300 per annum
- Ideal investment



### Local Information

- Council Tax Band A
- Tenure Leasehold 999 years – 992 years remaining
- EPC Rating D

#### FROME OFFICE

Telephone 01373 455060

6 The Bridge, Frome, Somerset, BA11 1AR

[frome@cooperandtanner.co.uk](mailto:frome@cooperandtanner.co.uk)

**COOPER  
AND  
TANNER**

Important Notice: These particulars are set out as a general outline only for the guidance of intended purchasers and do not constitute, nor constitute part of, an offer or contract. All descriptions, dimensions, reference to condition and necessary permissions for use and occupation, warranties and other details are given without responsibility and any intending purchasers should not rely on them as statements or representations of fact but must satisfy themselves by inspection or otherwise as to the correctness of each of them.

