



2 Wyatt Road, Staines-upon-Thames, Surrey. TW18 2AY.
2 Bedroom End of Terrace House - £465,000 Freehold

2 Wyatt Road, Staines-upon-Thames, Surrey. TW18 2AY.

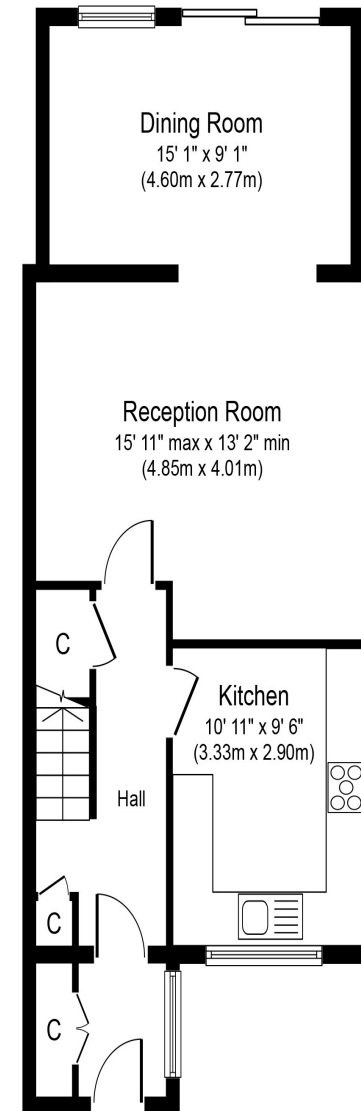
01784 451458

2 Bedroom End of Terrace House - £465,000 Freehold

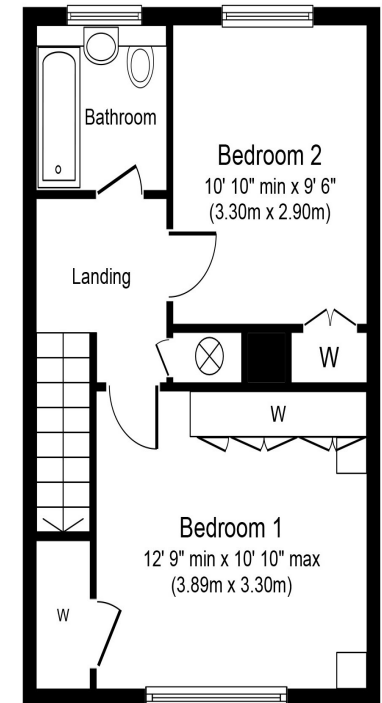
WELL PRESENTED, EXTENDED TWO BEDROOM END-TERRACED PROPERTY IDEALLY SITUATED ALONG SOUGHT AFTER ROAD WITHIN MOMENTS OF STAINES MAINLINE TRAIN STATION. The property benefits from a spacious lounge, dining room, modern fitted kitchen, two double bedrooms, modern white bathroom suite, secluded rear garden and off-street parking. Viewings Highly Recommended!

Key Features

- CLOSE TO MAINLINE TRAIN STATION
- VERY WELL PRESENTED THROUGHOUT
- EXTENDED
- SPACIOUS ROOMS
- IDEALLY POSITIONED FOR TOWN CENTRE & RIVER THAMES
- PRIVATE REAR GARDEN
- OFF-STREET PARKING



Ground Floor
Approximate Floor Area
581 sq. ft.
(54.0 sq. m.)



First Floor
Approximate Floor Area
398 sq. ft.
(37.0 sq. m.)



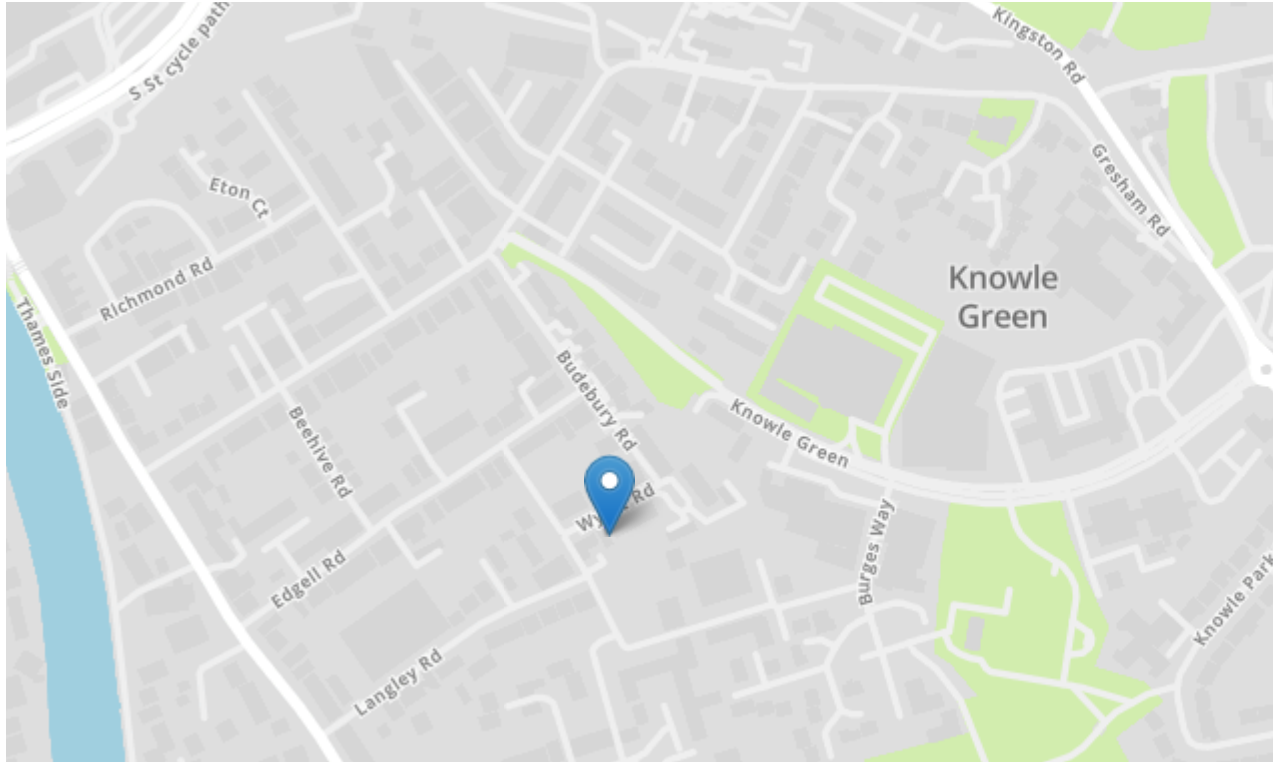
GREGORY BROWN
RESIDENTIAL SALES & LETTINGS





2 Wyatt Road, Staines-upon-Thames, Surrey. TW18 2AY.

gregory-brown.co.uk



Tenure **Freehold**
Lease Term
Ground Rent
Service Charge
Local Authority
Council Tax

We have prepared these property particulars as a general guide to a broad description of the property. They are not intended to constitute part of an offer or contract. We have not carried out a structural survey and the services, appliances and specific fittings have not been tested. All photographs, measurements, floorplans and distances referred to are given as a guide only and should not be relied upon for the purchase of carpets or any other fixtures or fittings. Lease details, service charges and ground rents (where applicable) and council tax are given as a guide only and should be checked and confirmed by your solicitor prior to exchange of contracts. The copyright of all details, photographs and floorplans remain exclusive to Gregory Brown.

