



The Garden Flat 143 Dorset Road, Bexhill-on-Sea, East Sussex, TN40 2HU

**£300,000**

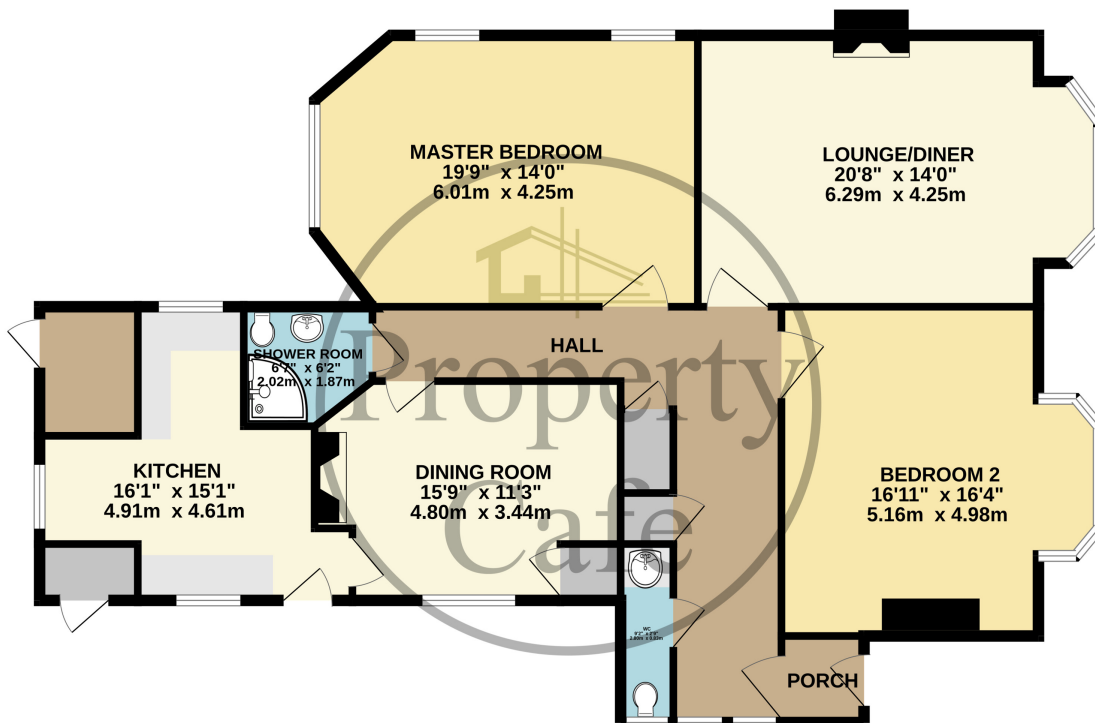


- Spacious Ground Floor Apartment
- Own Private Entrance
- Excellent Scope & Potential To Improve
- Allocated Off Road Parking Space
- Shared Front & Rear Garden
- Centrally Heated & Double Glazed
- Substantial Inner Hall With Storage
- Two Spacious Double Bedrooms
- Two Good Size Reception Rooms
- Basic Fitted Kitchen With Potential
- Flexible & Versatile Accommodation
- Great Potential To Improve
- Own Private Courtyard Area
- Modern Shower Rm & Sep W.C
- Sought After Location Close to Amenities
- Near The New Link Road
- Sold With No Onward Chain





**GROUND FLOOR**  
1411 sq.ft. (131.1 sq.m.) approx.



TOTAL FLOOR AREA : 1411 sq.ft. (131.1 sq.m.) approx.  
Whilst every attempt has been made to ensure the accuracy of the floorplan contained here, measurements of doors, windows, rooms and any other items are approximate and no responsibility is taken for any error, omission or mis-statement. This plan is for illustrative purposes only and should be used as such by any prospective purchaser. The services, systems and appliances shown have not been tested and no guarantee as to their operability or efficiency can be given.  
Made with Metroplan 5/2023

