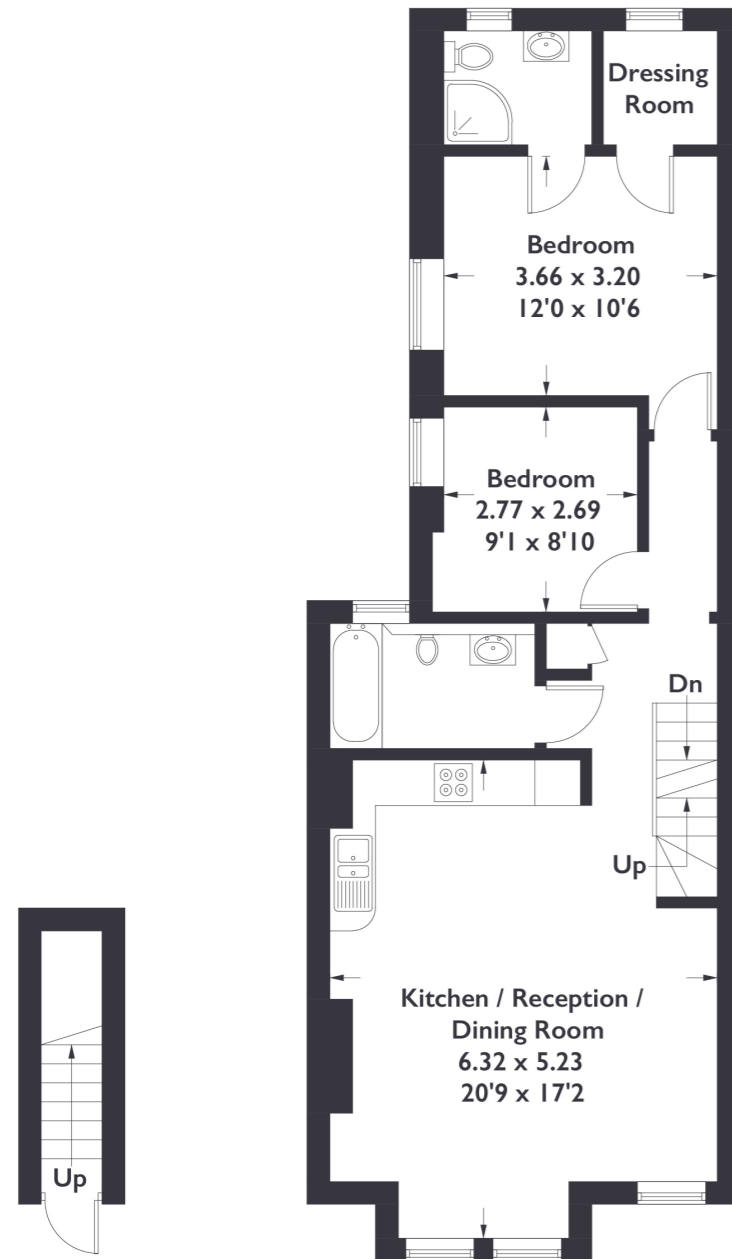


Westfield Road, W13

Approximate Gross Internal Area = 96.2 sq m / 1036 sq ft
(Including Reduced Headroom)

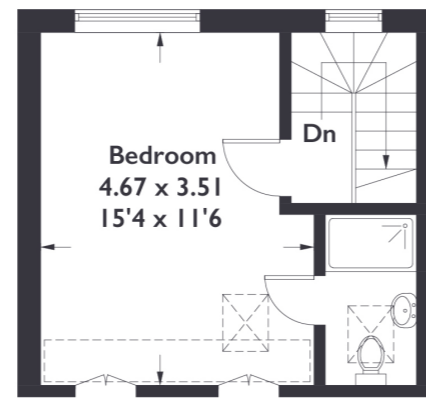


= Reduced Headroom



Ground Floor

First Floor



Second Floor



3 BEDROOM FLAT

Westfield Road, W13

£575,000

Beautifully presented three bedroom split level flat that has been tastefully refurbished to make a bright and spacious home. Benefits include easy access to West Ealing Mainline Station and Northfields Tube Station.

FEATURES

- Split Over Two Floors
- Three Double Bedrooms
- Share Of Freehold
- Decorated To A High Standard
- Three Bathrooms
- Open Plan Living / Kitchen Area
- West Ealing Station (Elizabeth Line)
- Northfields Station (Piccadilly Line)

Measured in accordance with RICS Code of Measuring Practice. To be used for identification and guidance purposes only. Whilst every care is taken in the preparation of this plan, please check all dimensions, shapes and compass bearings before making any decisions reliant upon them. www.london58.com © 2022 hello@london58.com



3 BEDROOM FLAT

Westfield Road, W13

£575,000

On the first floor of the property is a well designed open plan kitchen and living area, incorporating a stylish kitchen island and flooding with natural light.

With more than enough space for a reception, dining and kitchen area, the space is bright and decorated to a high standard. The first floor boasts two double bedrooms, the largest with the addition of an en-suite and walk in wardrobe. A large family bathroom and utility cupboard complete the first floor. A further double bedroom on the second floor with en-suite and access to eaves storage completes the property.

Westfield Road is an ideal location for easy access into Northfields, West Ealing and Ealing Broadway, with transport links only a short walk away such as West Ealing station (offering the Elizabeth Line) and Northfields tube station (Piccadilly line) making access into central London as convenient as ever. St John's Primary School and the Ofsted Outstanding Elthorne Park High School are both also a stones throw away.

