



9 Whittle Court,
Knowlhill, Milton Keynes, MK5 8FT

Tel: 01908 231 551 
mail@elevationstateagents.com



**17 Norman Crescent, Middleton, Milton
Keynes, Buckinghamshire, MK10 9JN**

£650,000 Freehold

- DOUBLE GARAGE
- GATED DRIVEWAY
- THREE RECEPTION ROOMS
- Outstanding school catchment
- Local amenities within walking distance
- Four double bedrooms
- EPC Rating



See our full selection of properties online at www.elevationstateagents.com



Ground Floor

Living Room

17' 6" x 10' 10" (5.33m x 3.30m)

Dining Room

10' 4" x 9' 8" (3.15m x 2.95m)

Study

10' 4" x 7' 6" (3.15m x 2.29m)

Kitchen/ Breakfast Room

13' 3" x 10' 2" (4.04m x 3.10m)

Utility

6' 5" x 5' 7" (1.96m x 1.70m)

First Floor

Master Bedroom

17' 6" x 11' 1" (5.33m x 3.38m)

Bedroom Two

13' 6" x 9' 5" (4.11m x 2.87m)

Bedroom Three

10' 5" x 9' 6" (3.17m x 2.90m)

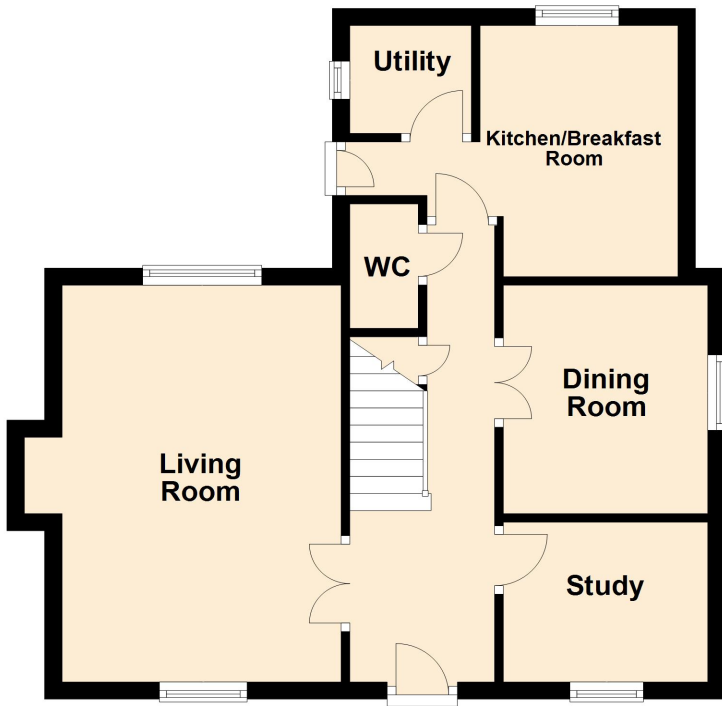
Bedroom Four

10' 5" x 7' 7" (3.17m x 2.31m)

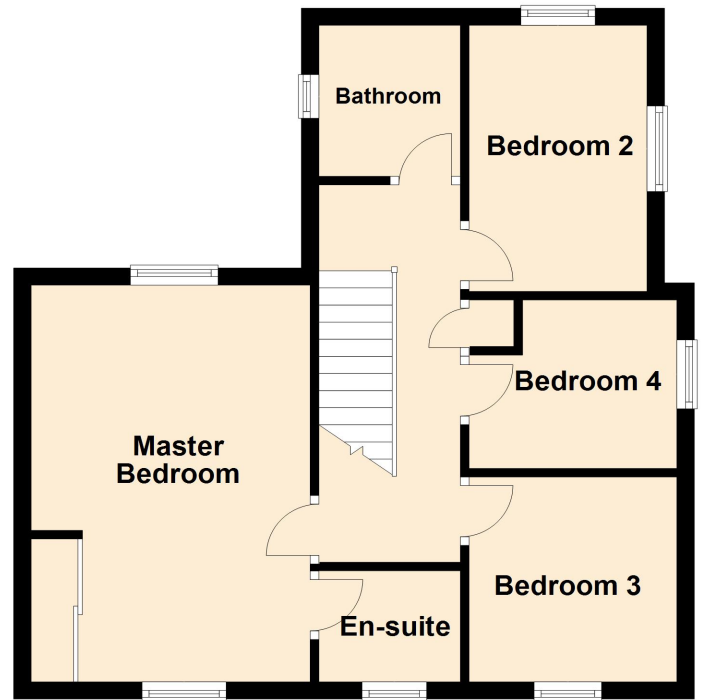
Disclaimer

Whilst we have endeavoured to prepare our sales particulars accurately none of the services, appliances or equipment have been tested. A buyer should satisfy themselves on such matters prior to purchase. Any measurements or distances mentioned in these particulars are for guide reference only. If such particulars are fundamental to a purchase, buyers should rely on their own enquiries. All enquiries should be directed to Elevation Estate Agents in the first instance.

Ground Floor



First Floor



Floor plans are for layout purposes only. Measurements are approximate and subject to inaccuracies
Plan produced using PlanUp.