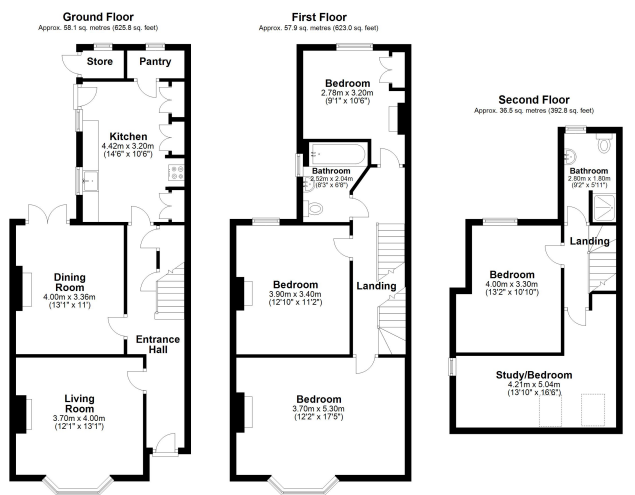


Braemar Avenue, Chelmsford
£775,000 Freehold

- Edwardian semi-detached character house
- Five Bedrooms
- full of character and charm
- Set over three floors
- family bathroom
- Viewing Advised

This charming five-bedroom semi-detached Edwardian home is located in a popular turning within the highly sought-after Old Moulsham area. The entrance features a welcoming hall with a staircase leading to the first floor. At the front of the property is the living room, while the rear offers a separate dining room with double doors that open to the garden. The kitchen/diner is equipped with a range of base and eye-level units, along with ample work surfaces. Additional ground-floor amenities



Total area: approx. 152.5 sq. metres (1641.6 sq. feet)
Braemar Ave