



Flat 2, 31 Eversley Road, Bexhill-on-Sea, East
Sussex, TN40 1HA

£329,950

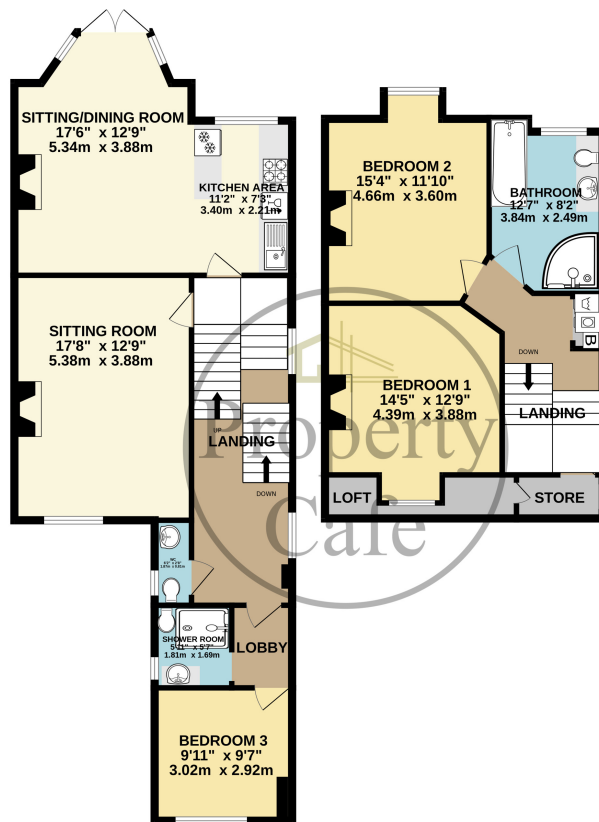


- Spacious three bedroom split level apartment
- Spacious and versatile accommodation
- Full width open plan kitchen dining room with bay window
- Three good size double bedrooms
- Modern shower and separate modern bathroom
- Long lease and freehold to the building
- Central heated and double glazed throughout
- Private off-road parking space to the front
- Ample storage and good size loft
- Long lease and low running cost
- Apartments of the size are rarely available
- Lovely character and period features
- Close to seafront & mainline station
- Situated in a sought-after town centre location
- Internal viewings highly recommended
- For additional details call our sales team on (01424) 224488



FIRST FLOOR
835 sq.ft. (77.6 sq.m.) approx.

2ND FLOOR
566 sq.ft. (52.6 sq.m.) approx.



TOTAL FLOOR AREA : 1402 sq.ft. (130.2 sq.m.) approx.

Whilst every attempt has been made to ensure the accuracy of the floorplan contained here, measurements of doors, windows, rooms and any other items are approximate and no responsibility is taken for any error, omission or mis-statement. This plan is for illustrative purposes only and should be used as such by any prospective purchaser. The services, systems and appliances shown have not been tested and no guarantee as to their operability or efficiency can be given.
Made with Metropix ©2024

