

FOR SALE

Ivy Crescent,
Chiswick Park, W4

Character Property
Chiswick Park

£1,400,000 fh

5  3  2 

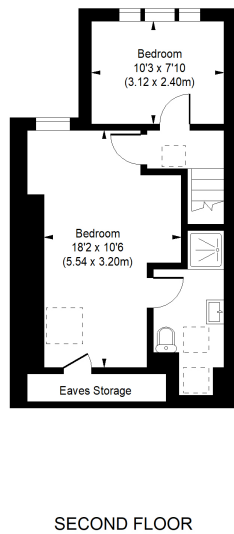
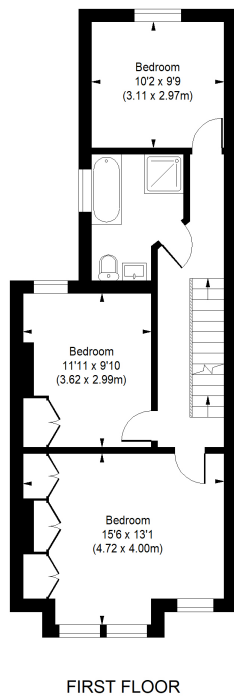
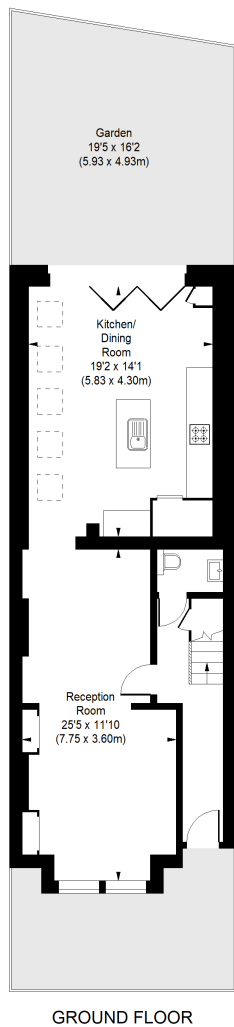


**horton
andgarton**

SALES / LETTINGS / PROPERTY MANAGEMENT

hortonandgarton.co.uk | Sales 020 3989 6464 | Lettings 020 3989 5454
161 Chiswick High Road, London, W4 2DT





IVY CRESCENT, W4

APPROXIMATE GROSS INTERNAL AREA

Main House : 1620 Sq/ 150.50 SqM

Eaves : 23 Sq/ 2.14 SqM

Total : 1643 Sq/ 152.63 SqM

Not to scale, for guidance only and must not be relied upon as a statement of fact.
All measurements and areas are approximate only



Edwardian bay fronted terraced house



hortonandgarton.co.uk

Sales 020 3989 6464

Lettings 020 3989 5454

161 Chiswick High Road, London, W4 2DT