



## Westfield Close

Hitchin | Hertfordshire | SG5 2HF

[www.stonegate-estates.co.uk](http://www.stonegate-estates.co.uk)





# WESTFIELD CLOSE

## Property Description

VIEWINGS TO COMMENCE FRIDAY \*\* FEBRUARY 2026

Located in this highly sought-after West Side location, an attractive, chain free, three-bedroom detached house offering an exceptional opportunity for buyers seeking a charming family home with enormous potential. It is situated in a peaceful and popular area plus is well placed for many amenities including the vibrant town centre and good schools covering all age ranges.

Upon entering, you are greeted by a wide entrance hall with a cloakroom. There is a welcoming dual aspect sitting room with a central fireplace. The separate dining room provides a versatile space ideal for formal dinners or casual everyday meals. The kitchen is well-equipped and adjoins a handy utility room, offering additional space for laundry and storage.

Upstairs there are three well-proportioned bedrooms. The bathroom has been refitted and converted into a modern shower/wet room. With large windows, every room benefits from plenty of natural light, creating an inviting and warm atmosphere throughout.

One of the standout features of this home is the large private garden, a true outdoor sanctuary perfect for gardening enthusiasts, children's play, or alfresco entertaining during the warmer months. The garden in our opinion also offers enormous potential for the existing home to be redeveloped and extended to create a substantial home (subject to obtaining the required consents). Additionally, the property includes a garage and ample off-road parking.

Being chain free, this home offers a smooth and straightforward purchasing process, ideal for buyers eager to move quickly. With excellent transport links, local amenities nearby, and a welcoming community feel, this property represents fantastic value and scope for enhancement. Arrange your viewing today and take the first step towards making this wonderful house your home.

**£750,000 Freehold**





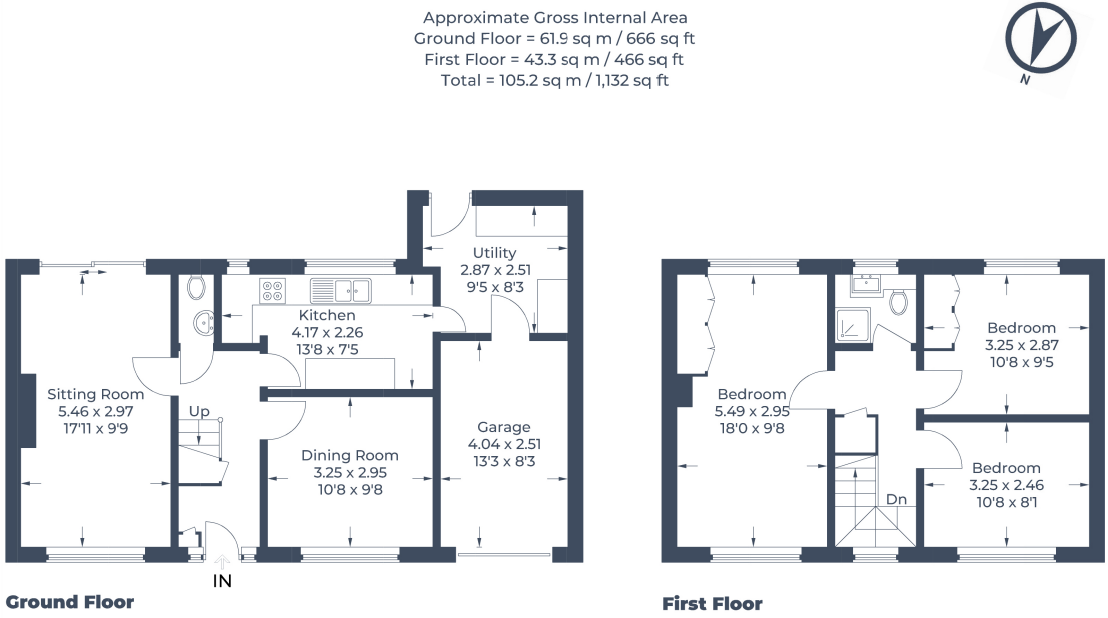


Illustration for identification purposes only,  
measurements are approximate, not to scale.  
© CJ Property Marketing Produced for Stonegates





- Chain Free
- Three Bedroom Detached House
- Popular West Side Location
- Dual Aspect Sitting Room
- Separate Dining Room
- Kitchen & Utility Room
- Refitted Shower/Wet Room
- Attractive Double Front Home
- Garage & Ample Parking
- Large Private Garden
- Enormous Potential

EPC Rating: D

---

Stonegate Estate Agents

01462 438979

[sales@stonegate-estates.co.uk](mailto:sales@stonegate-estates.co.uk) | [www.stonegate-estates.co.uk](http://www.stonegate-estates.co.uk)

