



FELLS GULLIVER  
ESTATE AGENTS

023 8028 4411  
[www.fellsgulliver.com](http://www.fellsgulliver.com)

# The Coppers, Bramshaw, Hampshire SO43 7JJ

---

£1,150,000

- Beautiful arts and crafts detached residence
- Rarely available opportunity
- In need of full refurbishment programme
- Extension potential STPP
- Idyllic location with direct views and access to the open forest
- 2,890 sq. ft of internal space including garages
- 3/4 acre of grounds and garden
- Three generously sized bedrooms with views of open forest
- Two double garages and ample parking space





3



1



3

Welcome to 'The Coppers' a charming home that blends the classic 'arts and crafts' style with stunning rural views.

Nestled on nearly 3/4 of an acre, this property offers both a serene escape and a chance to make it your own. While it's been a beloved home, new owners have the exciting opportunity to add their personal touch to this lovely three-bedroom house.

Welcome to 'The Coppers' a charming home that blends the classic 'arts and crafts' style with stunning rural views. Nestled on nearly 3/4 of an acre, this property offers both a serene escape and a chance to make it your own. While it's been a beloved home, new owners have the exciting opportunity to add their personal touch to this lovely three-bedroom house.



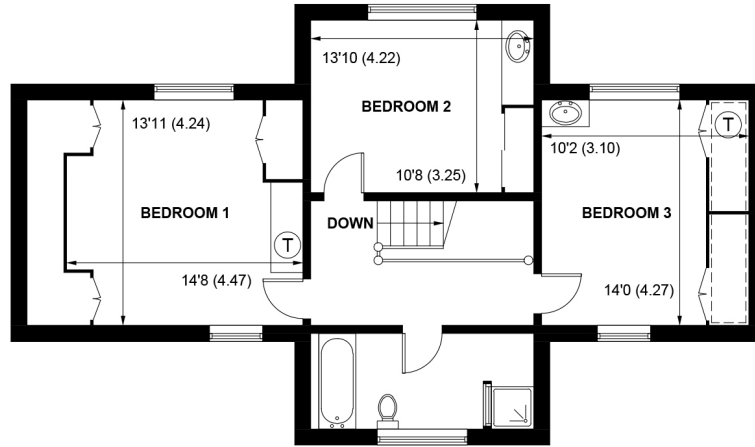




Outside, the gardens feature a mix of trees, sprawling lawns, and thoughtfully placed hedges that create cozy corners within the green space. What truly sets 'The Coppers' apart is its uninterrupted views of the New Forest – and there's even a direct gateway for you to explore this breathtaking landscape.

We believe 'The Coppers' offers a rare opportunity to own a wonderful family home in one of the most sought-after locations in the New Forest. Plus, if you're thinking of expanding, there's potential for extensions, subject to planning.





**FIRST FLOOR**



**GROUND FLOOR**

**APPROXIMATE GROSS INTERNAL AREA = 2890 SQ FT / 268.5 SQ M**

**(INCLUDING GARAGES)**

**NOT TO SCALE (For illustrative purposes only as defined by RICS Code of Measuring Practice) 2023 ©**

**Produced by Emzo Marketing**



**FELLS GULLIVER**  
ESTATE AGENTS

023 8028 4411  
[www.fellsgulliver.com](http://www.fellsgulliver.com)