



Day & Co  
ESTATE AGENTS

28 Cavendish Street  
Keighley  
BD21 3RG



167 Wheathead Lane, Keighley,  
West Yorkshire, BD22 6NB

£170,000

T: 01535 664609

W: [www.dayandcoestateagents.co.uk](http://www.dayandcoestateagents.co.uk)

E: [keighley@dayandcoestateagents.co.uk](mailto:keighley@dayandcoestateagents.co.uk)

- WELL PRESENTED TOWN HOUSE
- LOUNGE & EXTENDED DINING ROOM
- FRONT & REAR GARDENS

- THREE BEDROOMS
- SEPERATE GARAGE
- NO ONWARD CHAIN, EPC RATING C

## SUMMARY

\*\* WELL PRESENTED TOWN HOUSE, THREE BEDROOMS, LOUNGE & EXTENDED DINING ROOM, SEPERATE GARAGE & DRIVE, FRONT & REAR GARDENS, VIEWS, NO ONWARD CHAIN, INTERNAL VIEWING ADVISED, EPC RATING C \*\*

## FULL DESCRIPTION

Offered for sale with no onward chain is this well presented, three bedroom town house with front and rear gardens along with a single garage. This property could be of interest to a variety of buyers and an early internal viewing is advised.

The accommodation briefly comprises -

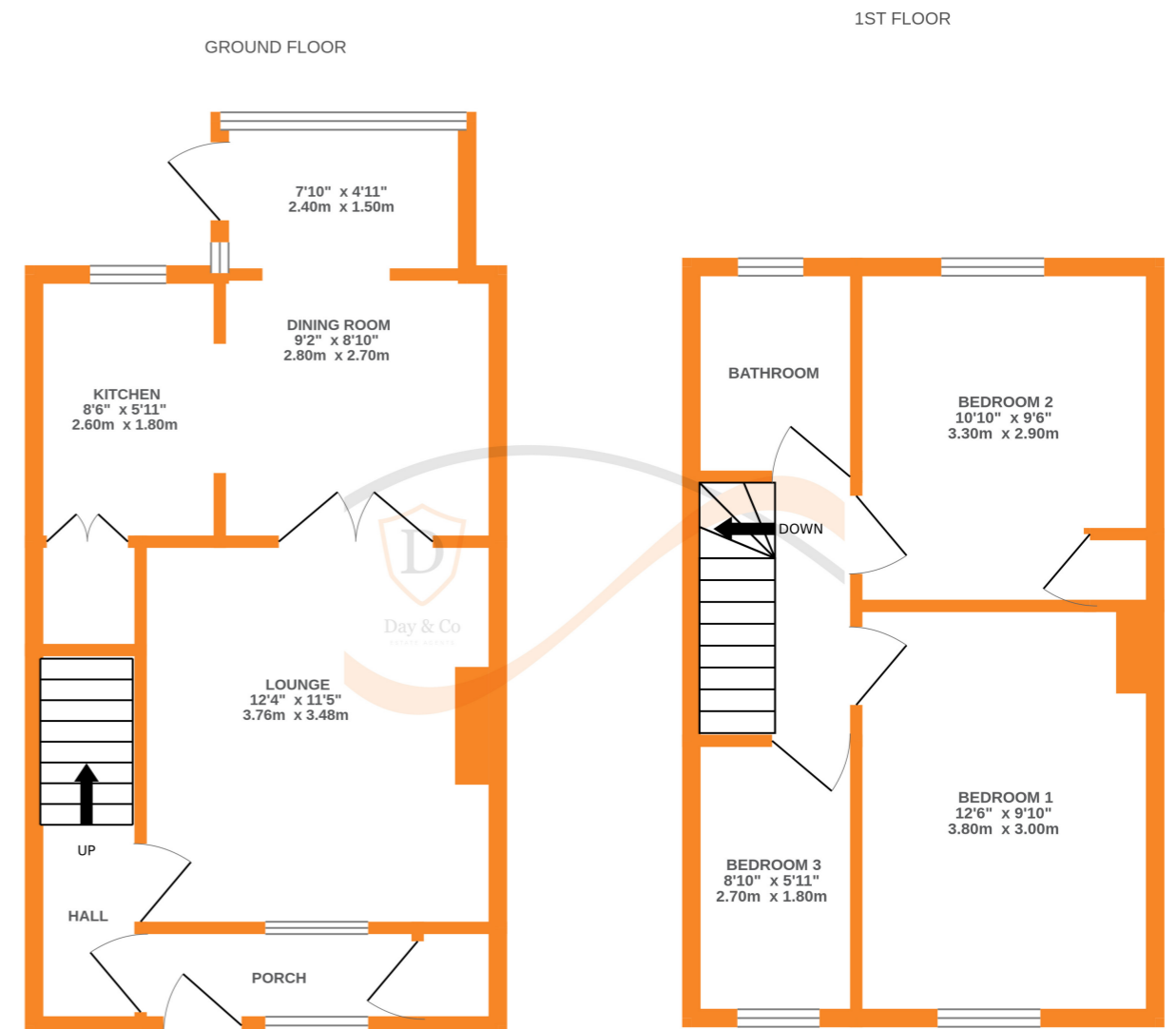
Ground Floor - Useful entrance porch with built in store, hall, lounge, extended dining room and fitted kitchen.

First Floor - Three bedrooms and a modern three piece bathroom suite.

Externally the property has a garden to the front with a larger more enclosed garden to the rear. In addition there is a single garage with off road parking to the front of this.

Located at the top of Wheathead Lane the property enjoys views and is handily placed for access to both primary and secondary schools.

EPC Rating C



Whilst every attempt has been made to ensure the accuracy of the floorplan contained here, measurements of doors, windows, rooms and any other items are approximate and no responsibility is taken for any error, omission or mis-statement. This plan is for illustrative purposes only and should be used as such by any prospective purchaser. The services, systems and appliances shown have not been tested and no guarantee as to their operability or efficiency can be given.  
Made with Metropix ©2024