



# 9, Allison

Letchworth Garden City,  
Hertfordshire, SG6 2JR

£375,000

country  
properties



Extended on the ground floor providing extra living accommodation. The ground floor has two separate reception rooms a kitchen/dining room, an adaptable home office/guest bedroom and a shower room. On the first floor there are three more bedrooms and a family bathroom. The property is set in a quiet location facing a small copse. Internal viewing comes highly recommended.

The Jackmans Estate is a residential area located in Letchworth Garden City, Hertfordshire, England. It is one of the several estates within the town, known for its mix of housing types including houses and apartments. The Jackmans Estate is situated in the south eastern part of Letchworth Garden City. It is a popular residential area with amenities such as local shops, schools, and parks nearby and easy access to the A1(M).

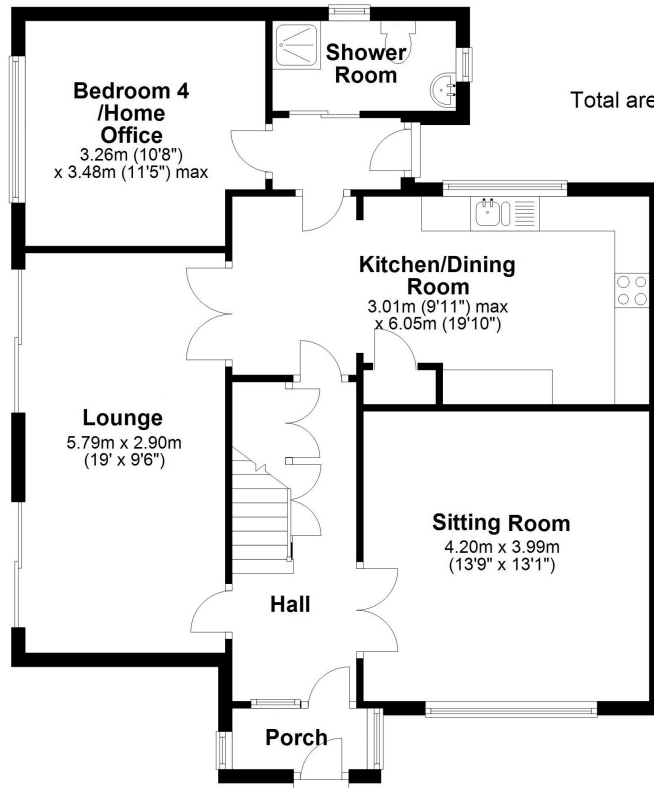
- Spacious kitchen/dining room with integrated oven and hob.
- Two separate reception rooms.
- Home Office/Guest Bedroom
- Ground floor shower room
- Gas central heating.
- Double glazed windows.
- Freehold





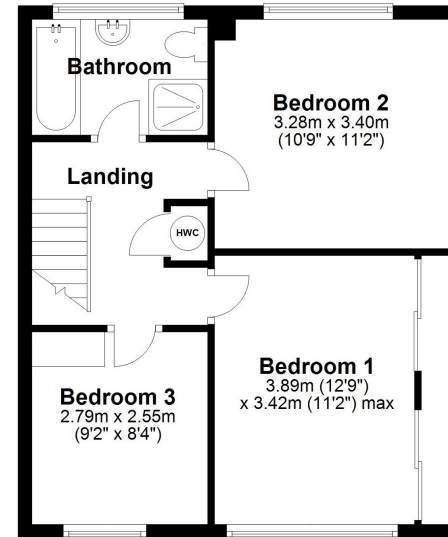




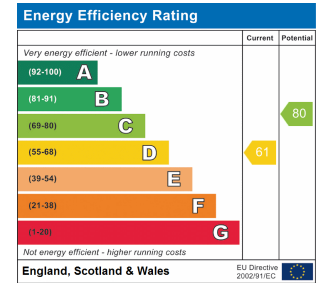


**Ground Floor**  
Approx. 80.3 sq. metres (864.3 sq. feet)

Total area: approx. 123.7 sq. metres (1331.6 sq. feet)



**First Floor**  
Approx. 43.4 sq. metres (467.2 sq. feet)



All measurements are approximate and quoted in metric with imperial equivalents and for general guidance only and whilst every attempt has been made to ensure accuracy, they must not be relied on. The fixtures, fittings and appliances referred to have not been tested and therefore no guarantee can be given and that they are in working order. Internal photographs are reproduced for general information and it must not be inferred that any item shown is included with the property. For a free valuation, contact the numbers listed on the brochure.

## Viewing by appointment only

Country Properties | 7, Howard Park Corner | SG6 1PQ  
T: 01462 481100 | E: [simon.ellmers@country-properties.co.uk](mailto:simon.ellmers@country-properties.co.uk)  
[www.country-properties.co.uk](http://www.country-properties.co.uk)

country  
properties