



10 Kilwinning Drive, Monkston, Milton Keynes, Buckinghamshire, MK10 9DZ

£385,000 Freehold

- Three double bedrooms
- Desirable area of Monkston
- Single Garage
- Off road Parking
- Conservatory
- Downstairs Cloakroom
- En Suite To Master
- Energy rating D
- EPC Rating





GROUND FLOOR

Entrance Hall

Doors leading to:

Kitchen

12' 8" x 6' 11" (3.86m x 2.11m)

Lounge

13' 3" x 12' 11" (4.05m x 3.93m)

Conservatory

12' 4" x 9' 9" (3.75m x 2.97m)

Downstairs Cloakroom

Fitted to comprise two piece suite

FIRST FLOOR

Landing

Doors leading to:

Bedroom Two

13' x 8' 8" (3.95m x 2.65m)

Family Bathroom

Fitted to comprise three piece suite

Bedroom Three

10' 9" x 9' 5" (3.28m x 2.88m)

SECOND FLOOR

Landing

Doors leading to:

Bedroom One

10' 8" x 12' 4" (3.26m x 3.76m)

En Suite To Master

Fitted to comprise three piece suite

EXTERIOR

Rear Garden

Front Garden

Single Garage

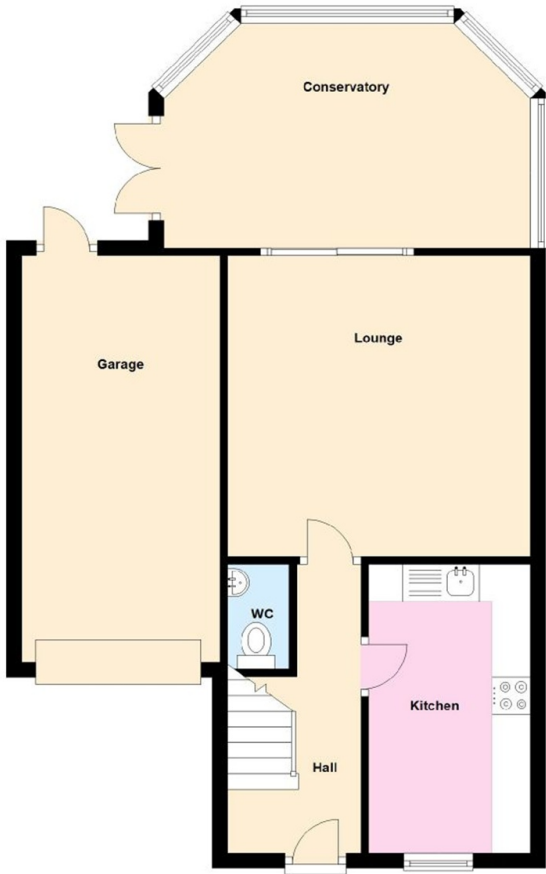
Driveway

Space for two vehicles

Disclaimer

Whilst we have endeavoured to prepare our sales particulars accurately none of the services, appliances or equipment have been tested. A buyer should satisfy themselves on such matters prior to purchase. Any measurements or distances mentioned in these particulars are for guide reference only. If such particulars are fundamental to a purchase, buyers should rely on their own enquiries. All enquiries should be directed to Elevation Estate Agents in the first instance.

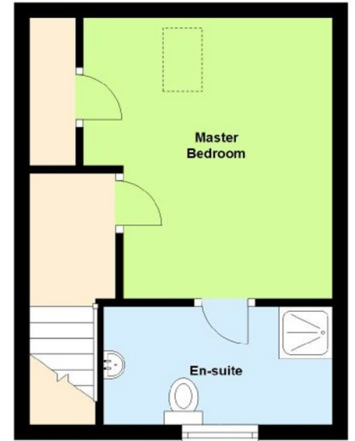
Ground Floor
Approx. 60.0 sq. metres



First Floor
Approx. 31.6 sq. metres



Second Floor
Approx. 21.5 sq. metres



Total area: approx. 113.1 sq. metres

Floor Plans are for layout purposes only.
Plan produced using PlanUp.