

41 Springshaw Road, Orpington, Kent, BR5 2RH

**Property Images**



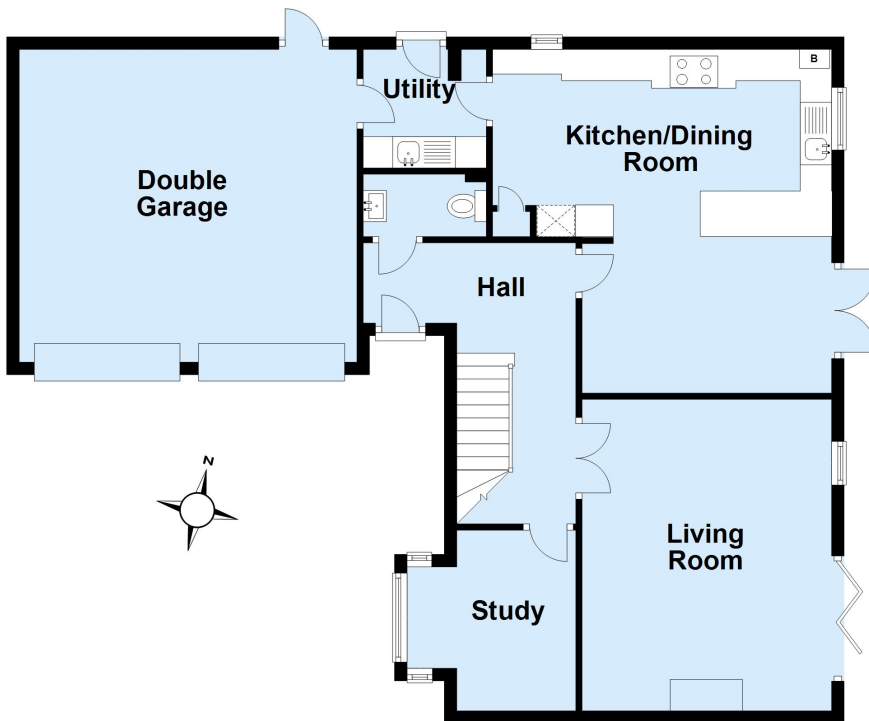






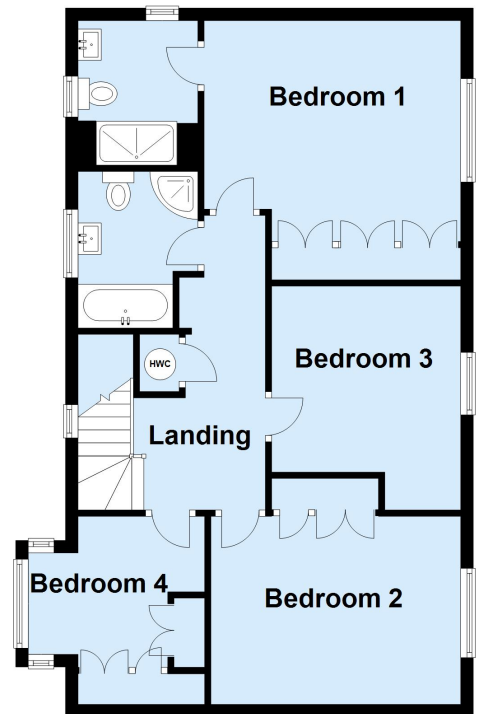
### Ground Floor

Approx. 98.5 sq. metres (1060.4 sq. feet)



### First Floor

Approx. 68.1 sq. metres (733.0 sq. feet)



Total area: approx. 166.6 sq. metres (1793.4 sq. feet)