



## 25 Barge Walk, Greenwich, LONDON, SE10 0FN

£1,625 PCM

Offering far reaching views across the River Thames, this fantastic two bedroom, two bathroom apartment boasts bright and spacious accommodation with a fully integrated kitchen and modern fixtures. Set within a remarkable new development with a communal roof terrace and concierge. Furnished. This property is available from the 2nd May.

Viewing by appointment with 1st avenue.

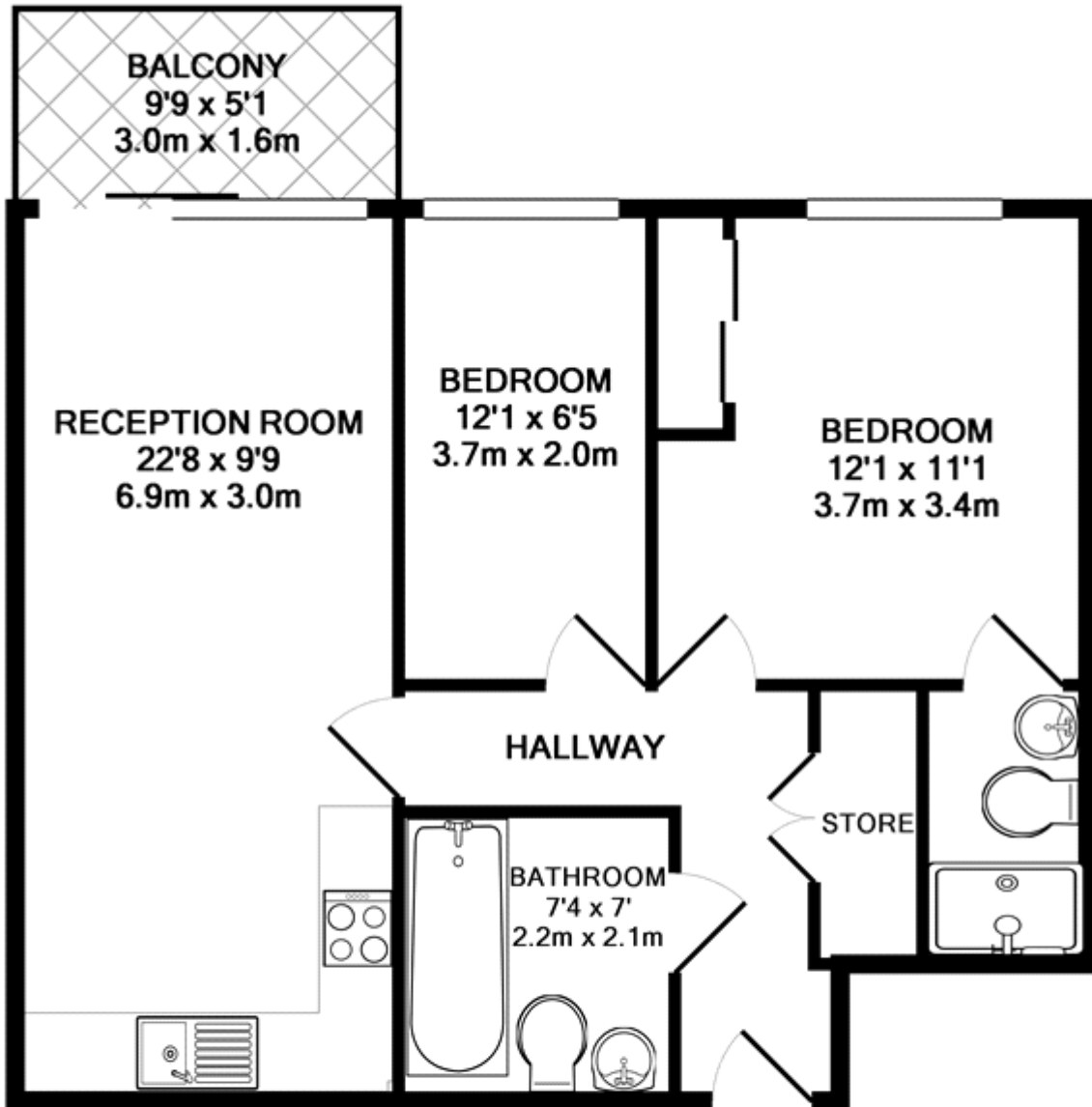
**Call: 020 8293 8600**

1st avenue, 128 Metcalfe Court, West Parkside, London SE10 0EL  
email: [info@1stavenue.co.uk](mailto:info@1stavenue.co.uk)

25 Barge Walk, Greenwich,  
LONDON, SE10 0FN

£1,625 PCM

1stavenue  
Real Estate Services



TOTAL APPROX. FLOOR AREA 596 SQ.FT. (55.4 SQ.M.)

Whilst every attempt has been made to ensure the accuracy of the floor plan contained here, measurements of doors, windows, rooms and any other items are approximate and no responsibility is taken for any error, omission, or mis-statement. This plan is for illustrative purposes only and should be used as such by any prospective purchaser. The services, systems and appliances shown have not been tested and no guarantee as to their operability or efficiency can be given

Made with Metropix ©2016

Viewing by appointment with 1st avenue.

**Call: 020 8293 8600**

1st avenue, 128 Metcalfe Court, West Parkside, London SE10 0EL  
email: info@1stavenue.co.uk

1stavenue  
Real Estate Services