

Maddocks Hill

Warminster, BA12 8DJ

COOPER
AND
TANNER



£265,000

This two bedroom semi detached bungalow is situated in a quiet cul-de-sac in a backwater of the town. It is located close to countryside with walks on your doorstep. It benefits from a lounge/dining room with doors opening onto the rear garden. A large garage and drive way parking.

Maddocks Hill

Warminster

BA12 8DJ

 2  2  1 EPC D

£265,000

DESCRIPTION

This two bedroom semi detached bungalow is situated in a quiet cul-de-sac in a backwater of the town. It is located close to countryside with walks on your doorstep. It benefits from a lounge/dining room with doors opening onto the rear garden. A large garage and drive way parking. Comprising large entrance hall (this could be used as an office). Hallway, modern kitchen with a range of wall and base units, integrated oven, built in electric hob with extractor over, there is an archway which leads to an a further area which can be used as a utility which has a door to the rear garden. It offers a good sized lounge/dining room with a feature fireplace and large doors open out into the back garden. There are two double bedrooms and a bathroom.

OUTSIDE

At the front of the property there are established gardens to the side with a driveway leading to the front , there is a garage which is 35ft long . At the rear of the property there is a private enclosed garden, it is laid to lawn to one side, there is a gravelled area and a patio, it has various borders with established shrubs and plants. There is side access to the garage.

COUNCIL TAX

BAND ' B '

LOCATION

The town of Warminster offers a wide range of shopping and leisure facilities to include library, sports centre, swimming pool, schools, churches, doctors' and dentists' surgeries, hospital and post office. Warminster also benefits from a main line railway station to London Waterloo whilst the nearby A303 provides excellent road links to London to the east and Exeter to the west. Local attractions include Longleat House and Safari Park, Shearwater Lake, Stourhead and Salisbury Plain.





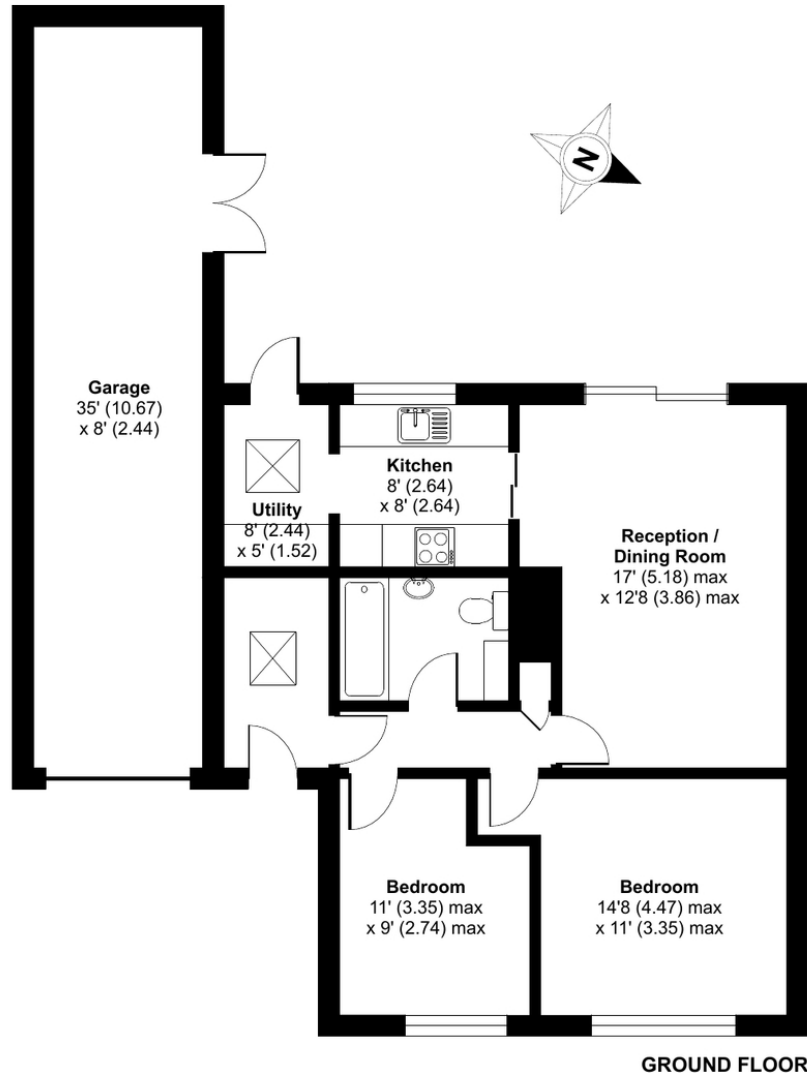
Maddocks Hill, Warminster, BA12

Approximate Area = 704 sq ft / 65.4 sq m

Garage = 280 sq ft / 26 sq m

Total = 984 sq ft / 91.4 sq m

For identification only - Not to scale



Floor plan produced in accordance with RICS Property Measurement Standards incorporating International Property Measurement Standards (IPMS2 Residential). © nchecon 2024. Produced for Cooper and Tanner. REF: 1112561

WARMINSTER OFFICE

Telephone 01985 215579

48-50, Market Place, Warminster, Wiltshire BA12 9AN

warminster@cooperandtanner.co.uk

**COOPER
AND
TANNER**

Important Notice: These particulars are set out as a general outline only for the guidance of intended purchasers and do not constitute, nor constitute part of, an offer or contract. All descriptions, dimensions, reference to condition and necessary permissions for use and occupation, warranties and other details are given without responsibility and any intending purchasers should not rely on the m as statements or representations of fact but must satisfy themselves by inspection or otherwise as to the correctness of each of them.

