





- Ground Floor Apartment
- Private Rear Garden
- Living Room
- Kitchen
- Two Bedrooms
- Parking Space

Description

A lovely, two bedroom ground floor apartment, situated on a popular development with good local amenities immediately available. The property has the exclusive use of a private garden and is presented to a high standard. With gas central heating and PVCu double glazing, the accommodation comprises: Entrance hall with cloaks cupboard, living room, separate kitchen, two bedrooms, (one with a fitted mirrored door wardrobe) and a modern bathroom. There is also an allocated parking space. Immediately available, restrictions apply.



Location
Tenure

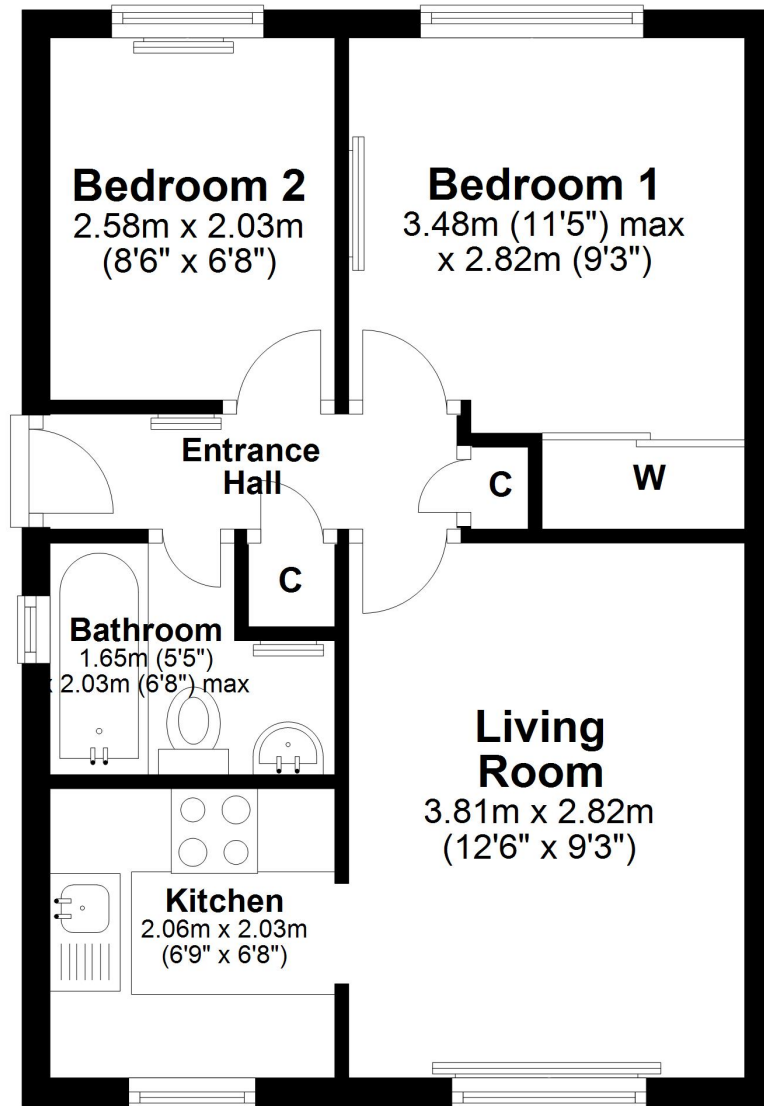
EPC Rating: C

Important Notes
Type Here



Ground Floor

Approx. 36.7 sq. metres (395.4 sq. feet)



Total area: approx. 36.7 sq. metres (395.4 sq. feet)