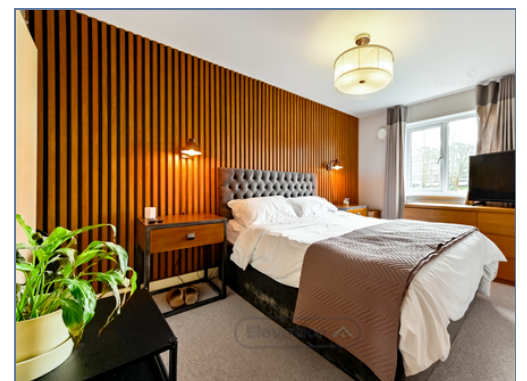




## Flat 3, 27 Bunkers Crescent, Bletchley, Milton Keynes, Buckinghamshire, MK3 6FP

### £240,000 Leasehold

- Under 10 minute walk to the station
- Two double bedrooms
- Green outlook
- Commuters to London!!
- Great condition
- Service charge is £102pm
- Ground rent is £150pa
- First Floor Apartment
- Low density development
- Great first time





Located within walking distance to the main line station leading to London Euston and the North (Bletchley). A lovely apartment offering a green outlook, spacious accommodation and stylish finish. The property also offers allocated parking excellent quality flooring and an internal viewing is highly recommended. The low density development could suit first time buyers, commuters or downsizers. To arrange a viewing please contact the elevation team. Likely to rent for £1,250 per month

## Living Room / Kitchen

Wall to Wall- 3.401m x 7.3347m (11' 2" x 24' 1")

## Bedroom 1

Wall to Wall - 2.96m x 3.97m (9' 9" x 13' 0")

## Bedroom 2

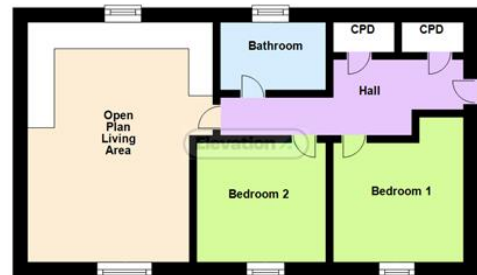
Wall to Wall - 2.89m x 4.67m (9' 6" x 15' 4")  
 Wall to Wardrobe -2.89m x 4.03m (9' 6" x 13' 3")

## Bathroom

## Disclaimer

Whilst we have endeavoured to prepare our sales particulars accurately none of the services, appliances or equipment have been tested. A buyer should satisfy themselves on such matters prior to purchase. Any measurements or distances mentioned in these particulars are for guide reference only. If such particulars are fundamental to a purchase, buyers should rely on their own enquiries. All enquiries should be directed to Elevation Estate Agents in the first instance.

## Ground Floor



Floor plans are for layout purposes only. Measurements are approximate and subject to inaccuracies  
 Plan produced using PlanUp.

Energy Efficiency Rating		Current	Potential
Very energy efficient - lower running costs			
(92+)	<b>A</b>		
(81-91)	<b>B</b>	84	84
(69-80)	<b>C</b>		
(55-68)	<b>D</b>		
(39-54)	<b>E</b>		
(21-38)	<b>F</b>		
(1-20)	<b>G</b>		
Not energy efficient - higher running costs			
England, Scotland & Wales		EU Directive 2002/91/EC	