

## Virgo Fidelis Apartment 3, 76a Shorncliffe Road

FOLKESTONE, Kent  
CT20 2UN

**£425,000 FREEHOLD**

FOR SALE WITH BURNAP + ABEL... Welcome to this stunning 2 bed maisonette in the sought-after location of Virgo Fidelis on Shorncliffe Road in Folkestone's West End. This beautiful new home boasts a spacious open plan living area with a sleek German kitchen and integrated appliances, perfect for entertaining guests or enjoying cosy nights in. The master bedroom features a luxurious en-suite shower room, and the apartment also includes a second shower room and a separate W.C. The living area features a private balcony, ideal for sipping your morning coffee or soaking in the evening sunset. Convenience meets luxury with an EV charger included with your allocated parking space. Don't miss out on this incredible opportunity to own a modern and sophisticated residence in one of Folkestone's most prestigious neighbourhoods. Schedule your viewing today.



**Entrance Hall**

**Lounge**

12' 8" x 9' 8" (3.86m x 2.95m)

**Kitchen/Dining Room**

17' 9" x 8' 10" (5.41m x 2.69m)

**Cloakroom/W.C**

**Inner Hall**

**Utility Room/Store**

**Family Bathroom**

9' 8" x 5' 11" (2.95m x 1.80m)

**Bedroom One**

13' 1" x 11' 6" (3.99m x 3.51m)

**En-Suite**

**Bedroom Two**

14' 6" x 8' 9" (4.42m x 2.67m)

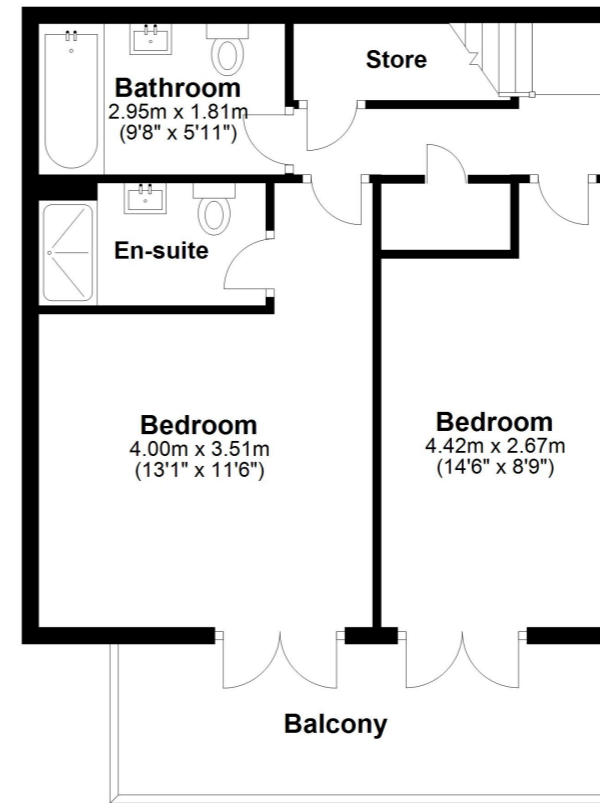
**Terrace**

**Balcony**

**Allocated Parking Space**

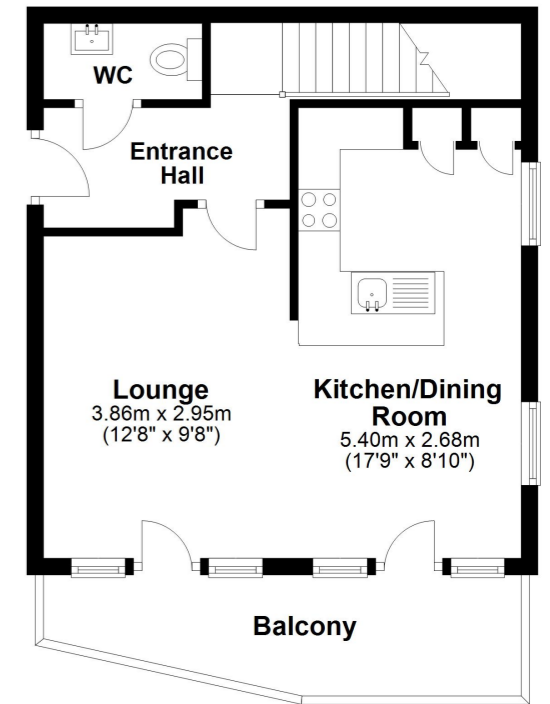
**Ground Floor**

Approx. 48.0 sq. metres (517.2 sq. feet)



**First Floor**

Approx. 34.7 sq. metres (373.2 sq. feet)



**Total area: approx. 82.7 sq. metres (890.4 sq. feet)**

Whilst every attempt has been made to ensure the accuracy of the floor plan contained here, measurements of doors, windows, rooms and any other items are approximate and no responsibility is taken for any error, omission or mis-statement. This plan is for illustrative purposes only and should be used as such by any prospective purchaser.  
Plan produced using PlanUp.

