



**Shelley Court, Library Road  
Ferndown, Dorset, BH22 9JZ**

# LEASEHOLD (Share of Freehold)

## PRICE £239,950

***“A second floor apartment with stair lift, single garage and a share of the freehold”***

This superbly positioned and generous sized two double bedroom second floor apartment has a southerly facing balcony, stair lift in the communal hallway, garage and a share of the freehold.

This light and spacious apartment has a recently replaced kitchen, a 22ft lounge/dining room with direct access out to a southerly facing private balcony, the added benefit of a separate cloakroom off the entrance hall, a single garage located in a nearby block and the apartment is sold with a share of the freehold and now comes to the market offered with no onward chain.

Shelley Court is located in the heart of Ferndown's town centre.

- **Second floor apartment with a stairlift, a share of the freehold and no chain**
- **Communal entrance hall with stairlift**
- **Entrance porch**
- **Cloakroom** with wc, wash hand basin, fully tiled walls and flooring
- **Inner entrance hall**
- **22ft Dual aspect lounge/dining room** with sliding patio doors leading out to a balcony
- **12ft Southerly facing private balcony**
- **Refitted modern kitchen** incorporating ample worktops, a range of high gloss base and wall units, integrated oven, grill, hob and extractor, recess for a freezer, integrated fridge, integrated washing machine, wall-mounted gas-fired boiler and attractive tiled splashbacks
- **Bedroom one** is a good sized double bedroom benefitting from an excellent range of fitted bedroom furniture
- **Bedroom two** is also a generous sized double bedroom
- **Family bathroom** incorporating a corner Jacuzzi bath with mixer taps and shower attachment, pedestal wash hand basin, wc, fully tiled walls and flooring
- The property is conveyed with a **single garage** located in a nearby block
- **Further benefits** include double glazing, a gas-fired heating system, entry phone intercoms system and the property comes to the market offered with no onward chain

Ferndown offers an excellent range of shopping, leisure and recreational facilities.

**Lease:** 999 years from March 1976

**Maintenance:** £350 per quarter

**Ground Rent:** None

**COUNCIL TAX BAND: D**

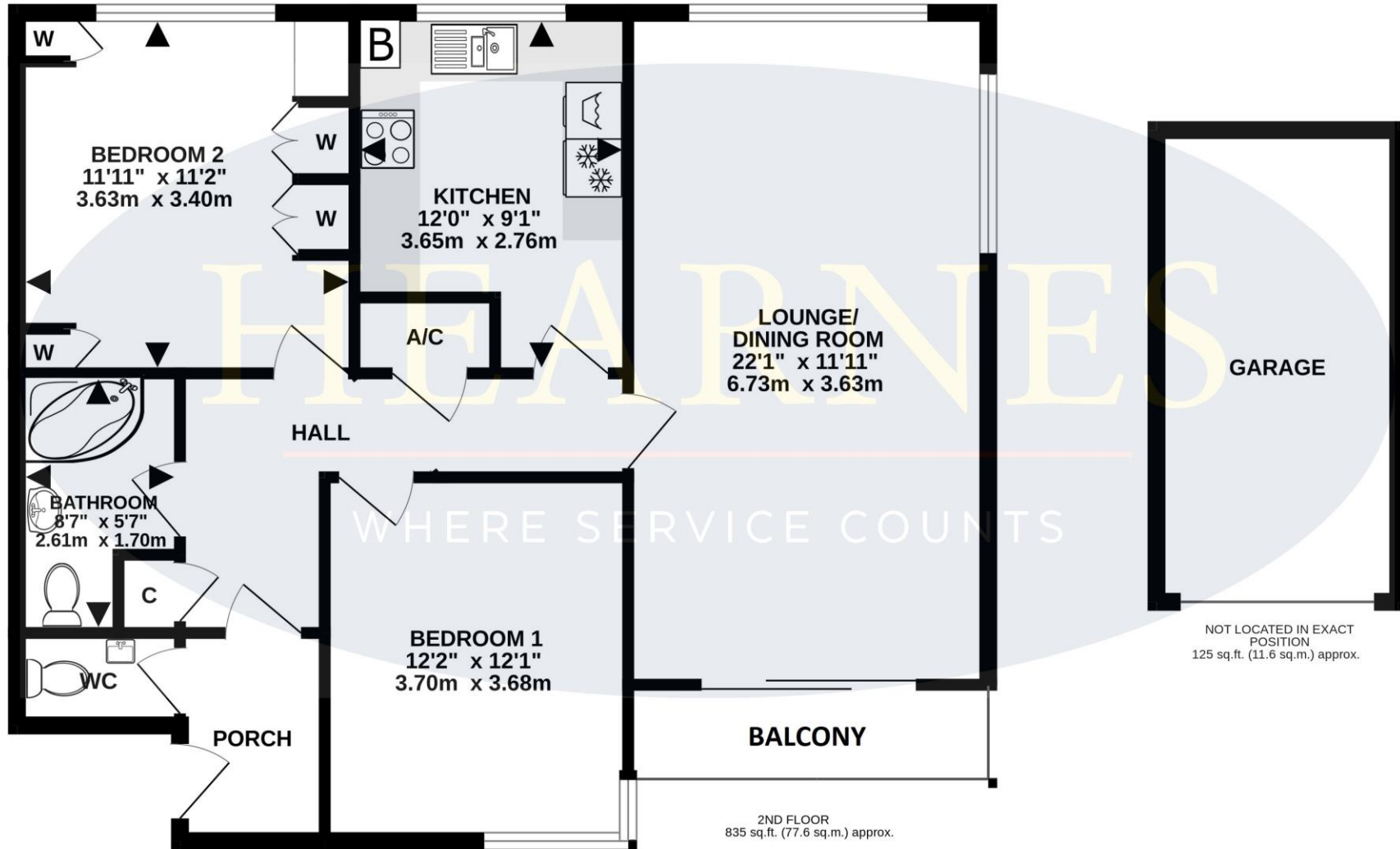
**EPC RATING: D**



AGENTS NOTES: The heating system, mains and appliances have not been tested by Hearnes Estate Agents. Any areas, measurements or distances are approximate. The text, photographs and plans are for guidance only and are not necessarily comprehensive. Whilst reasonable endeavours have been made to ensure that the information in our sales particulars are as accurate as possible, this information has been provided for us by the seller and is not guaranteed. Any intending buyer should not rely on the information we have supplied and should satisfy themselves by inspection, searches, enquiries and survey as to the correctness of each statement before making a financial or legal commitment. We have not checked the legal documentation to verify the legal status, including the leased term and ground rent and escalation of ground rent of the property (where applicable). A buyer must not rely upon the information provided until it has been verified by their own solicitors.

TOTAL FLOOR AREA : 960 sq.ft. (89.1 sq.m.) approx.

Whilst every attempt has been made to ensure the accuracy of the floorplan contained here, measurements of doors, windows, rooms and any other items are approximate and no responsibility is taken for any error, omission or mis-statement. This plan is for illustrative purposes only and should be used as such by any prospective purchaser. The services, systems and appliances shown have not been tested and no guarantee as to their operability or efficiency can be given.  
Made with Metropix ©2024



6-8 Victoria Road, Ferndown, Dorset. BH22 9HZ Tel: 01202 890890 Email: ferndown@hearnes.com www.hearnes.com

OFFICES ALSO AT: BOURNEMOUTH, POOLE, RINGWOOD & WIMBORNE

