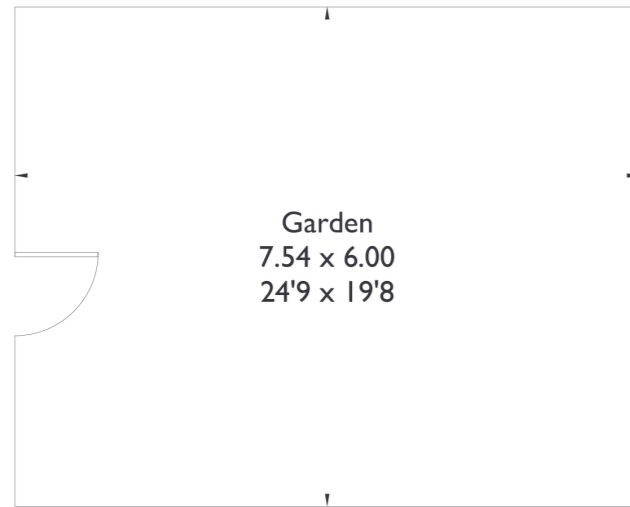
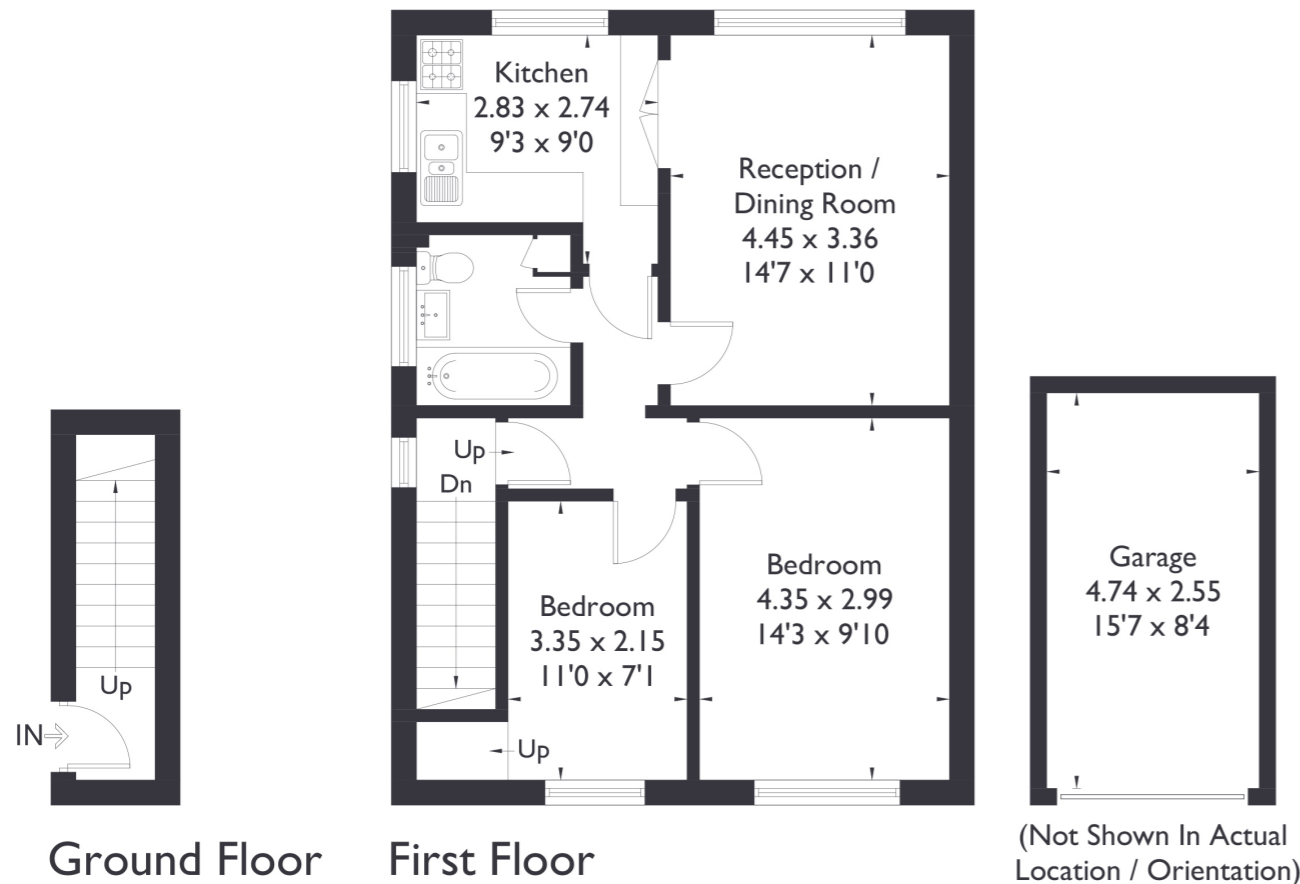


6 Milton Road, W7

Approximate Floor Area = 61.3 sq m / 660 sq ft
Garage = 12.1 sq m / 130 sq ft
Total = 73.4 sq m / 790 sq ft



(Not Shown In Actual Location / Orientation)



(Not Shown In Actual Location / Orientation)



2 BEDROOM FLAT

Milton Road, W7

£399,950

Welcome to this charming two bedroom, one bathroom flat located in Hanwell. The property boasts spacious rooms throughout, including a bright and inviting reception room, and features a lovely private garden, perfect for outdoor relaxation.

FEATURES

- Share Of Freedhold
- Two Bedrooms
- One Bathroom
- Private Garden
- Private Garage
- Hanwell Station (Elizabeth Line)
- Hobbayne Primay School/Drayton Manor High School
- EPC Rating C



2 BEDROOM FLAT

Milton Road, W7

£399,950

This wonderful flat is ideal for families who want to move in the area.

The property is in a prime location, just a 5 minute walk from Hanwell Station with access to the Elizabeth Line and close to the shops and amenities on Greenford Avenue. Additionally, it falls within the catchment area for the highly sought-after Drayton Manor High School. EPC Rating C.

