

51 Leadon Bank
Orchard Lane Ledbury HR8 1BY

£189,950



- Set within walking distance of Ledbury town centre.
- Wide range of on-site facilities.
- Dedicated secure storage for mobility scooter.
- No onward chain.
- Two Bedrooms
- Lounge/Dining Room
- Communal Gardens

51 Leadon Bank

Situation and Description

51 Leadon Bank is situated on the third floor, of a very popular retirement complex, which offers a very comprehensive range of on-site facilities to include, Restaurant, Laundry Facilities, Communal Lounges, Hairdressers, Guest Suite, Mobility Scooter charging points and a comprehensive activity schedule for residents.

In more detail the accommodation comprises:

Reception Hall

with power points, radiator, emergency call system and door entry system, doors to:

Hall Cupboard

Fuse box, power points, shelved storage.

Kitchen

9' 7" x 7' 6" (2.92m x 2.29m) with window to front looking into the communal corridor, Velux window with remote control, range of laminate worktops with cupboards and drawers under, inset stainless steel sink with drainer, built in electric hob with stainless steel extractor hood over, eye level electric oven, eye level wall cupboards, space for fridge, tiled splashbacks, power points, radiator.

Lounge

16' 3" x 11' 10" (4.95m x 3.61m) with window with pleasant outlook, Air conditioning unit (hot/cold) radiator, power points, telephone point, T.V point.

Bedroom One

18' 4" x 11' 3" (5.59m x 3.43m) with window with pleasant outlook, radiator, power points, television point, unit of two x double wardrobes and shelving unit, telephone point.

Bedroom Two

9' 6" x 9' 4" (2.90m x 2.84m) with Velux windows, radiator, power points.

Shower Room

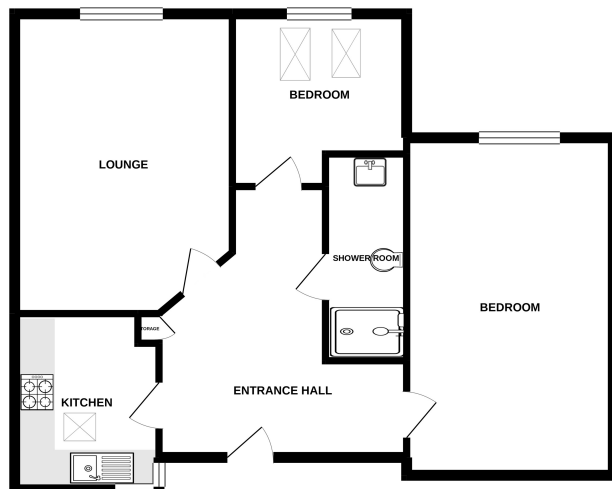
With a fitted shower and grab rail with tiled surrounds. Inset wash hand basin with cupboards under. low flush W.C, wall mounted mirror, shaver point, radiator, extractor fan.

Outside

Communal Gardens

Leadon Bank stands in good sized attractive communal gardens which are pleasantly arranged with areas of lawn with established plants and shrubs and several seating areas including a feature terrace. There is a large car park providing resident and visitor parking.

GROUND FLOOR



Made with Metagix ©2022

GENERAL INFORMATION

Tenure

Leasehold - 99 years commenced August 2004.

Service charge - £645.01 PCM

Gas and Electric - £52.00 PCM

Water - £20.68 PCM

Ground rent £500 payable in two instalments.

Services

All mains services are connected.

Outgoings

Council Tax: Band C

Viewing

By appointment through the Agents:

Hereford Office

8 King Street

Hereford, HR4 9BW

T: 01432 343477

E: hereford@shandw.co.uk

Ledbury Office

14 The Homend

Ledbury, HR8 1BT

T: 01531 631177

E: ledbury@shandw.co.uk

www.stookehillandwalshe.co.uk

Offers

As part of the Estate Agency Act 1979, we have a legal obligation to financially qualify every offer before it is conveyed to the vendors.

N.B. Appliances listed in these details have not been tested by the Agents. Any prospective purchasers should satisfy themselves that they are...

Energy Efficiency Rating		Current	Potential
Very energy efficient - lower running costs			
(92+)	A		
(81-91)	B	81	81
(69-80)	C		
(55-68)	D		
(39-54)	E		
(21-38)	F		
(1-20)	G		
Not energy efficient - higher running costs			
England, Scotland & Wales			
		EU Directive 2002/91/EC	

MISREPRESENTATION ACT 1967 Stooke, Hill + Walshe for themselves and the Vendor of this property whose agents they are, give notice that- (1) These particulars do not constitute nor constitute any part of, an offer or a contract. (2) All statements contained in these particulars as to this property are made without responsibility on the part of Stooke, Hill + Walshe or the vendor. (3) None of the statements contained in these particulars as to the property is to be relied on as a statement or representation of the fact. (4) Any intending purchaser must satisfy himself by inspection of otherwise as to the correctness of each of the statements in these particulars. (5) The vendor does not make or give, and neither Stooke, Hill + Walshe nor any person in their employment has the authority to make or give, any representation of warranty, whatever in relation to this property.