





- Large Semi-Detached Home
- Three Reception Rooms
- Kitchen
- Three Bedrooms
- Two Bath/Shower Rooms
- Garden
- Unrestrictive On Street Parking

Description

A large, Victorian semi-detached family home, located close to northwich town centre. The property provides versatile accommodation, suitable for a variety of purposes with three ground floor rooms, that could be used as either reception rooms or bedrooms. There is also a kitchen, shower room and hallway on the ground floor. Upstairs there are three double bedrooms and a bathroom. Externally there is a rear garden and there is unrestricted on street parking in front of the house. Immediately available, restrictions apply.



Location
Tenure

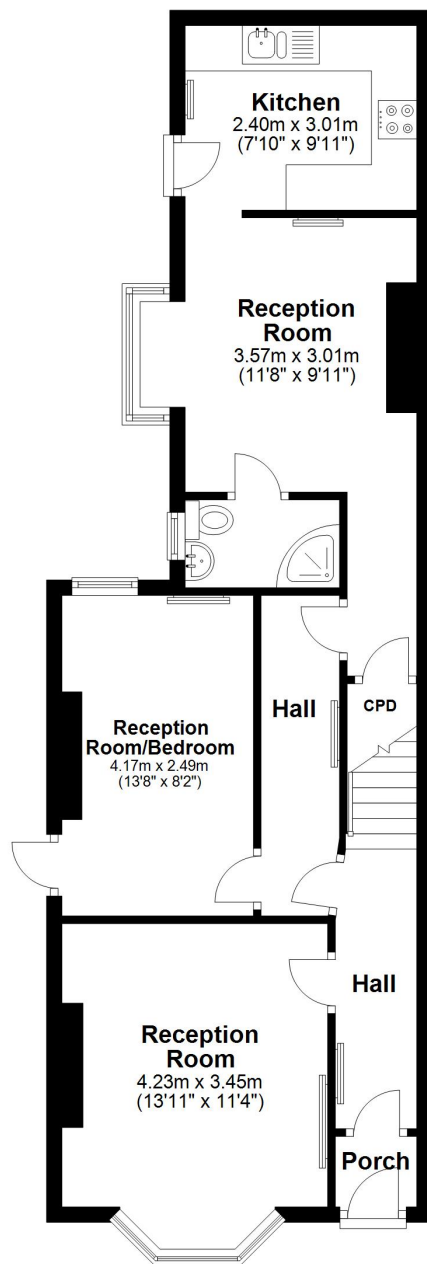
EPC Rating: D

Important Notes



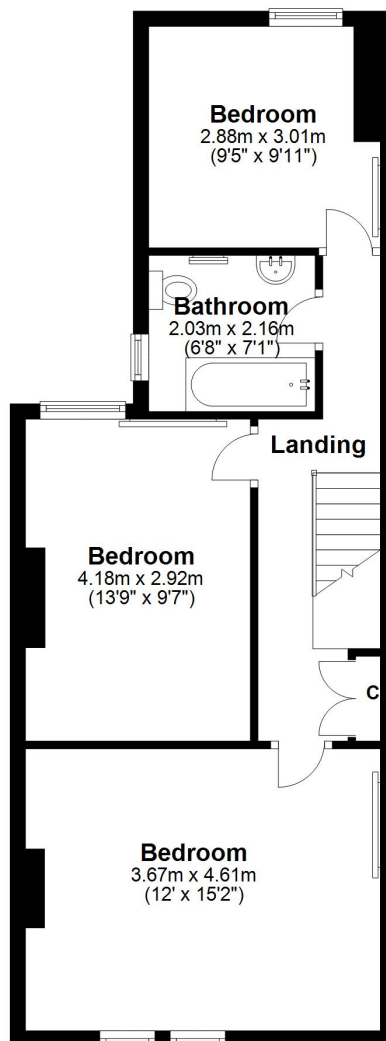
Ground Floor

Approx. 59.6 sq. metres (641.9 sq. feet)



First Floor

Approx. 52.0 sq. metres (560.1 sq. feet)



Total area: approx. 111.7 sq. metres (1202.0 sq. feet)