



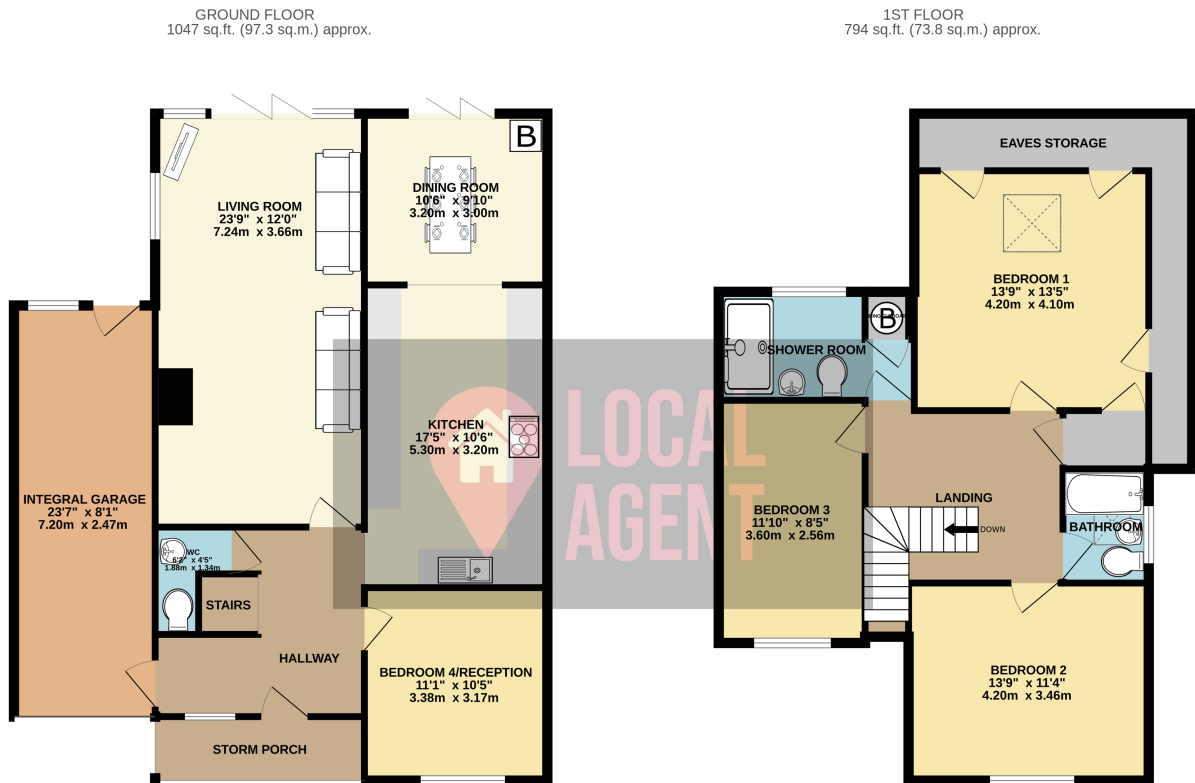
**23 Alfred Road, Dartford, Kent, DA2 7SQ**  
**Guide Price £600,000 Freehold**

## Description

Guide Price £600,000 - £650,000

As you approach the home through the village you will appreciate the beautiful rural views as the home is surrounded by fields. Beautifully decorated and designed Detached home with Three Bedrooms on the 1st floor, two bathrooms and on the ground floor 4th bedroom/reception for sale in rural location. . The property offers ample parking to the front and large integral garage to the side. The rooms are generous with a recently fitted kitchen and shower room. We expecting a lot of interest, so contact us now to arrange your viewing!

Perfectly located for easy access to Sutton at Hone village, Farningham and Eynsford villages, this has a rural feel to it with the property being surrounded by fields. It has excellent access to motorway networks and railway links, Farningham Road station 2.1 miles, Swanley 3.9 miles, Dartford 2.6 miles, Ebbsfleet International station 6.5 miles, (All distances are approximate). The M25 at Junction 3 offers access to Gatwick, Stansted and Heathrow. M20 provides convenient access to London and the Kent coast. The area boasts for its excellent range of schools including Dartford Grammar and The Leigh Academy. Sutton-at-Hone Primary School which is currently rated at good but aspiring to be outstanding and only 1.6 miles away. Locally there are many excellent leisure facilities including Bluewater shopping centre, The London Golf Club and Brands Hatch motor racing circuit. You will also find and a range of boutique shops, country pubs and restaurants in the surrounding villages.



TOTAL FLOOR AREA: 1842 sq.ft. (171.1 sq.m.) approx.

Whilst every attempt has been made to ensure the accuracy of the floorplan contained here, measurements of doors, windows, rooms and any other items are approximate and no responsibility is taken for any error.