



Aylmer Road, London, W12 9LQ

Cow & Co
LONDON



A beautifully presented three bedroom split level apartment, refurbished to an incredibly high standard offering direct access onto a large private rear garden. The property is bright and spacious throughout with the added benefit of two bathrooms along fantastic decor throughout.

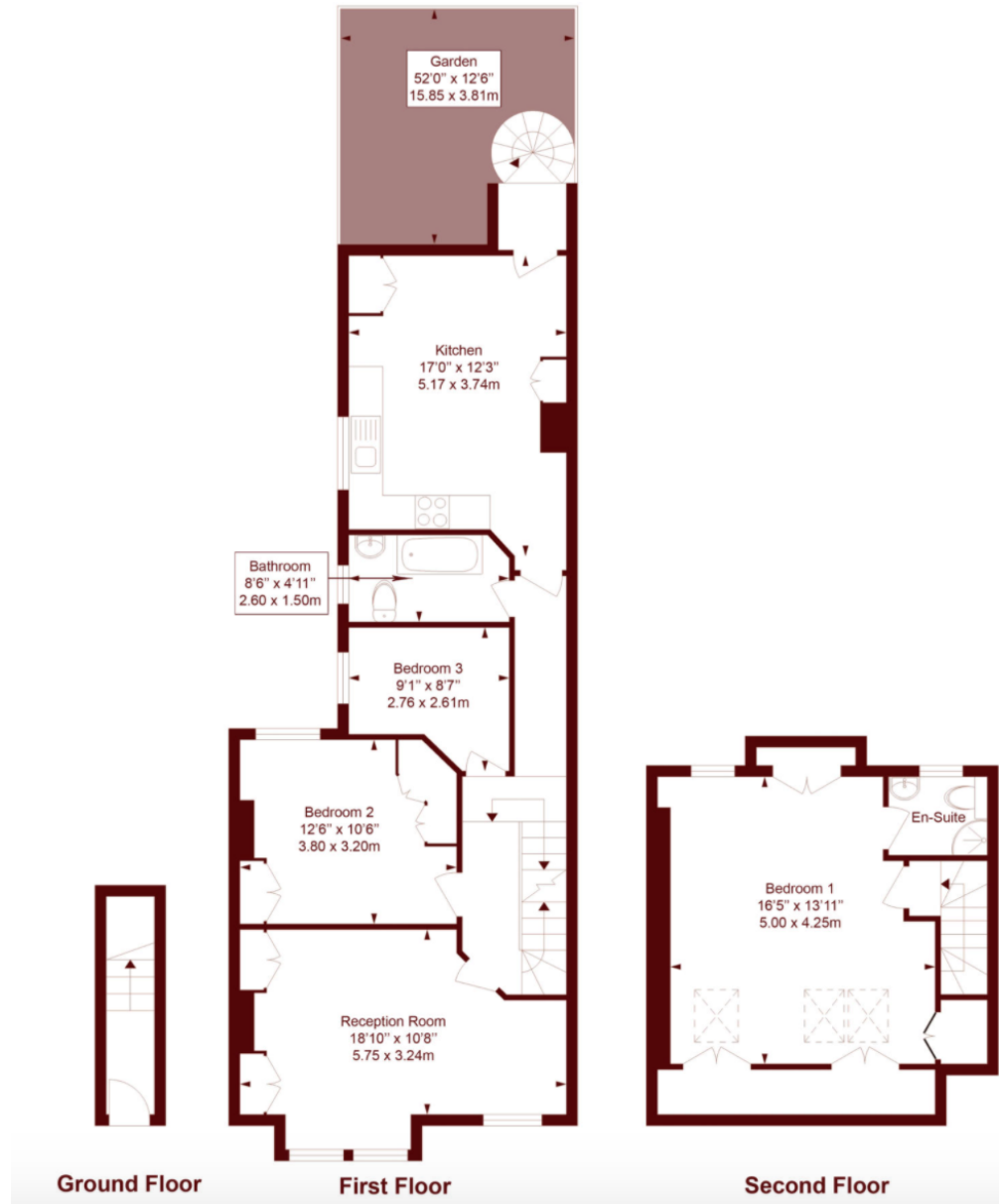
Aylmer Road is a tree lined street tucked away between Cobbold and Wendell Road. Askew Road, Ravenscourt and Wendell Park are within a short walk, as is Chiswick High Road with all its amenities. The area has numerous good schools and the shopping and transports hubs of Hammersmith and Westfield. Stamford Brook tube (District Line) is an approximate 10 minute walk.



- Simply stunning three bedroom apartment spread over two floors offering bright and spacious throughout
- Own front door
- Direct access via a spiral staircase to a large landscaped rear garden
- Sleek contemporary style open plan kitchen with ample space to dine and entertain
- Two refurbished bathrooms
- Decorated and finished to a high standard
- Close proximity to local transport links and amenities
- Premier location in the heart of Wendell Park

Aylmer Road

APPROX. GROSS INTERNAL FLOOR AREA: 1130 SQFT/ 105 SQM



Ground Floor

First Floor

Second Floor

Agents note: All measurements are approximate and whilst every attempt has been made to ensure accuracy they are for general guidance only and must not be relied on. The fixture and fittings referred to have not been tested and therefore no guarantee can be given that they are in working order. Internal photographs are reproduced for general information and it must not be inferred that any item shown is included with the property.

Cow & Co
LONDON

Tel: 0208 065 0010
Email: thehub@cowandco-london.com
Web: cowandco-london.com