



Bury Place, London, WC1A 2JS

Cow & Co
LONDON



GUIDE PRICE OF £600,000-700,000. A stunning one bedroom flat in a late Victorian redbrick mansion building in a prime Bloomsbury location close to the British Museum. This apartment is in excellent order throughout. The accommodation consists of a long entry hall leading to a good sized bathroom, a lovely light filled double bedroom. A great kitchen/diner and a wonderful cozy sitting room with lots of period features including a fire place, cornices and large bay windows.

Russell Chambers is found on Bury place which runs between Bloomsbury Way and Great Russell Street, close to the British Museum. It is incredibly well positioned for access to all the universities and academic institutions found in Bloomsbury as well as the retail and dining and entertainment opportunities of the West End.

Conveniently located for the underground stations of Tottenham Court Road, Holborn and Russell Square.

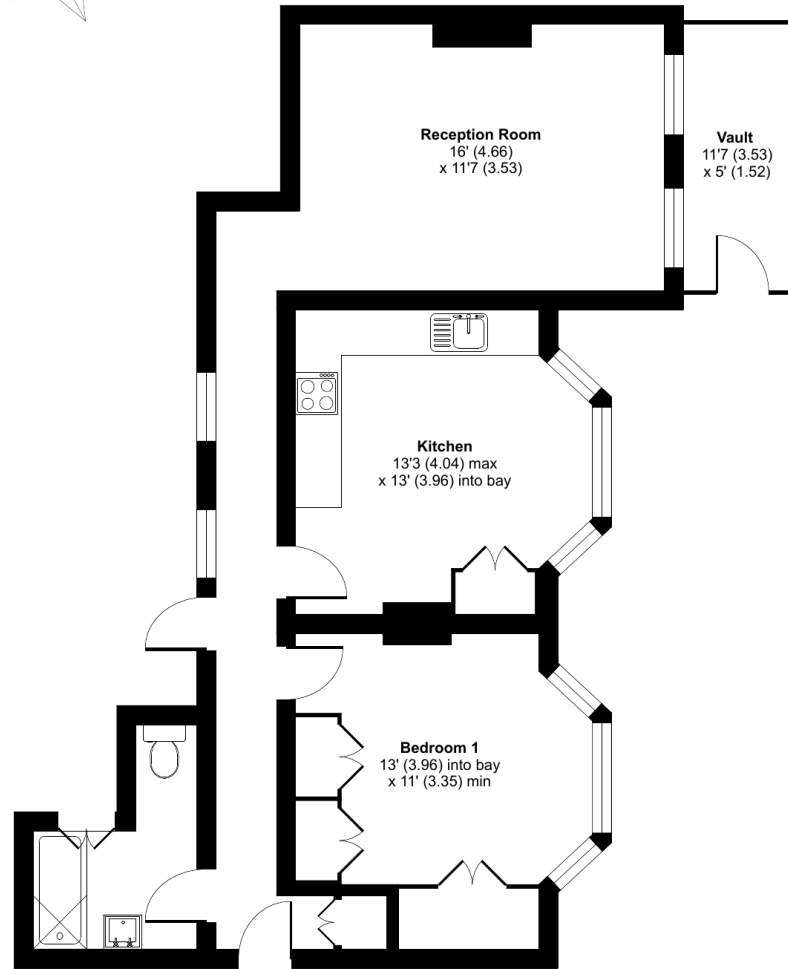


- Lower ground apartment
- High ceilings with bright and spacious accommodation throughout
- One bedroom apartment
- Excellent central London location

Bury Place, London, WC1A

Approximate Area = 757 sq ft / 70.3 sq m

For identification only - Not to scale



**LOWER
GROUND FLOOR**



Floor plan produced in accordance with RICS Property Measurement Standards incorporating International Property Measurement Standards (IPMS2 Residential). © nchecom 2022
Produced for Cow & Co Properties Ltd. REF: 907218

Tel: 0208 065 0010
Email: thehub@cowandco-london.com
Web: cowandco-london.com

Agents note: All measurements are approximate and whilst every attempt has been made to ensure accuracy they are for general guidance only and must not be relied on. The fixture and fittings referred to have not been tested and therefore no guarantee can be given that they are in working order. Internal photographs are reproduced for general information and it must not be inferred that any item shown is included with the property.

Cow & Co
LONDON