



## **Park Road, Colliers Wood, SW19 2HS**

**£3,500 PCM**

**4 Bedroom Maisonette to Let**



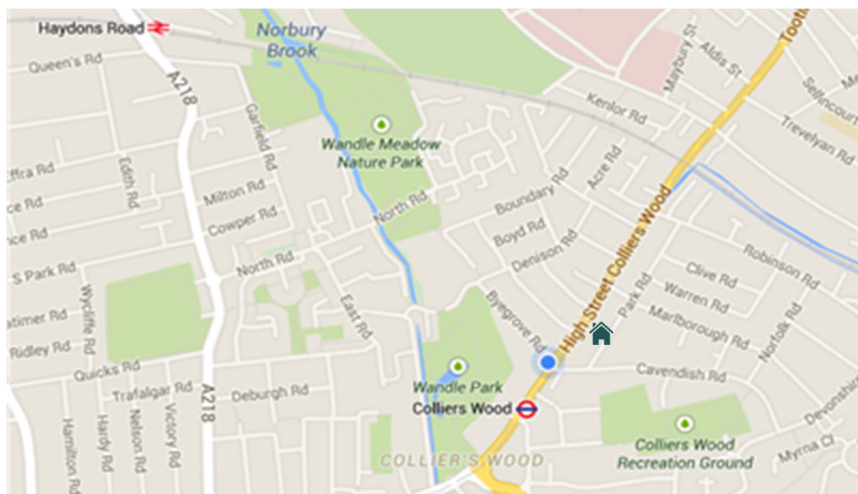


## PROPERTY DETAILS

- Detached Maisonette
- A Short Walk of The Tube
- Prime Location
- 4 Double Bedrooms
- Spacious Living Room
- Fully Fitted Kitchen
- 2 Modern Bathrooms
- Gas Central Heating
- EPC Rating = D







 Colliers Wood 3 Minute Walk

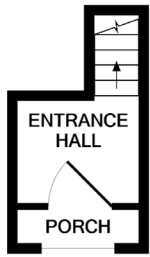
 Singlegate Primary 4 Min Walk

 St. Georges 10 Minute Walk

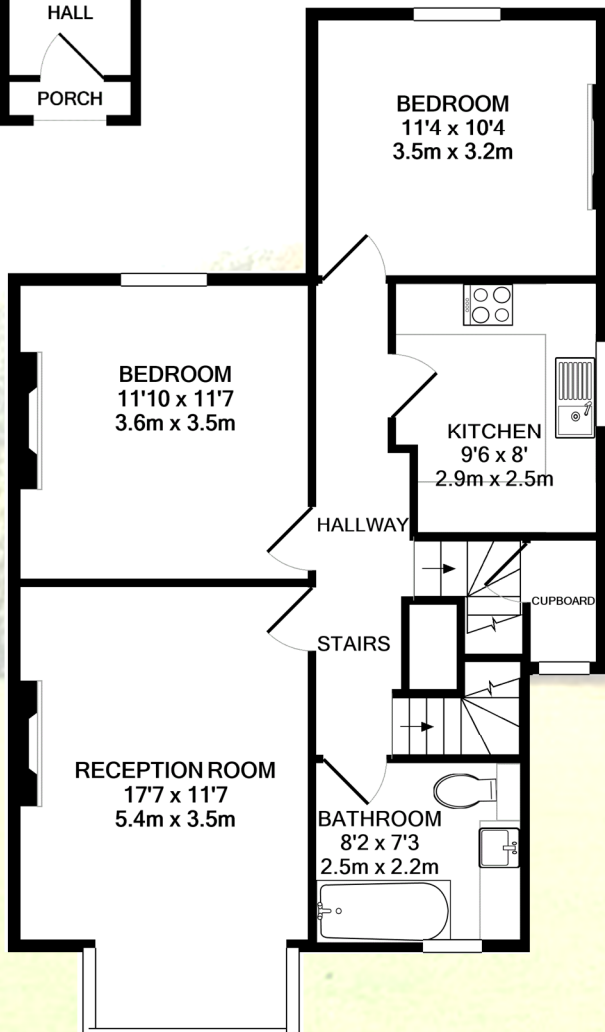
 Tooting Broadway 13 Minute Walk

 Tooting 15 Minute Walk

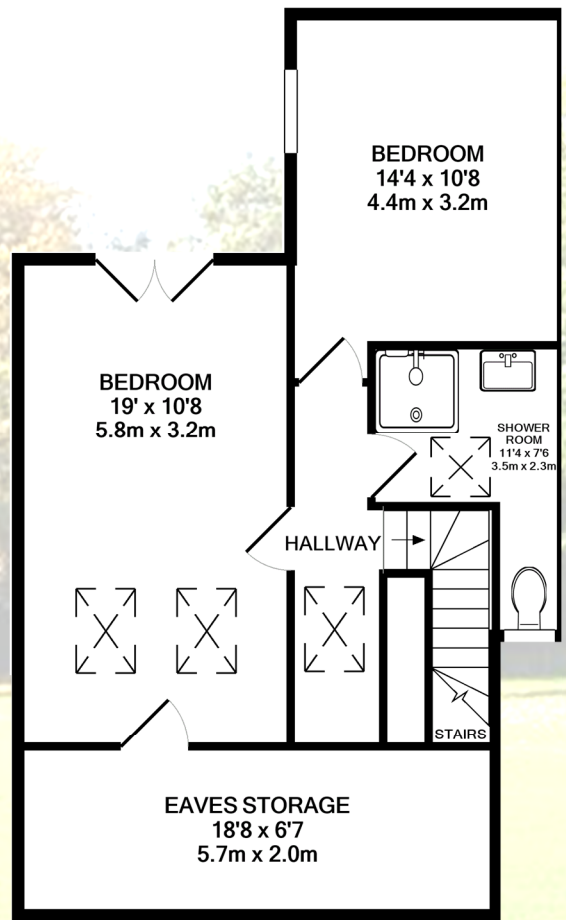
## GROUND FLOOR



## FIRST FLOOR



## SECOND FLOOR



**TOTAL APPROX. FLOOR AREA:**  
**116.6 SQ.M. / 1255 SQ.FT.**  
(Excludes Eaves)

Cross & Prior endeavour to maintain accurate depictions of properties in Floor Plans and descriptions, however, these are intended only as a guide and purchasers must satisfy themselves by personal inspection.



*Established Since 1910*

## CONTACT

103 High Street, Colliers Wood,  
London SW19 2JF

[enquiries@crossprior.co.uk](mailto:enquiries@crossprior.co.uk)  
[www.crossprior.co.uk](http://www.crossprior.co.uk)

**0208 715 0555**

## VIEWING ARRANGEMENTS

Strictly by appointment with:  
Cross & Prior

