



5 Ecob Close, Guildford, Surrey. GU3 3HP

- Four Bedrooms
- Two Bathrooms
- Family Room
- Lounge/diner
- Dining Area
- Enclosed Rear Garden
- Fitted Kitchen
- Garage In A Block
- Cul De Sac
- Must Be Seen



PROPERTY DESCRIPTION

Situated in a cul de sac location this extended end of terrace home comes to the market offering a lounge/diner, fitted kitchen, cloakroom and family room on the ground floor whilst the first floor offers four bedrooms, en suite and bathroom. Further benefits include gas central heating, double glazing, enclosed rear garden and a garage in a nearby block but to fully appreciate the accommodation available viewings are highly recommended



ROOM DESCRIPTIONS

Ground Floor

Entrance Hall

Stairs to first floor, coat hanging space, doors to:

Cloakroom

Low level w.c , wash hand basin, double glazed window

Family Room

Rear aspect double glazed doors, radiator

Lounge/Diner

Front aspect double glazed window, rear aspect double glazed doors, radiator, through to:

Kitchen

Rear aspect double glazed window, range of eye and base level units, wall mounted boiler, space for appliances, roll top surfaces.

First Floor

Bedroom

Rear aspect double glazed window, radiator, door to:

En Suite

Shower unit, low level w.c, wash hand basin

Bathroom

Frosted double glazed window, low level w.c, wash hand basin, panel enclosed bath.

Bedroom

Rear aspect double glazed window, radiator

Bedroom

Front aspect double glazed window, radiator

Bedroom

Front aspect double glazed window, radiator

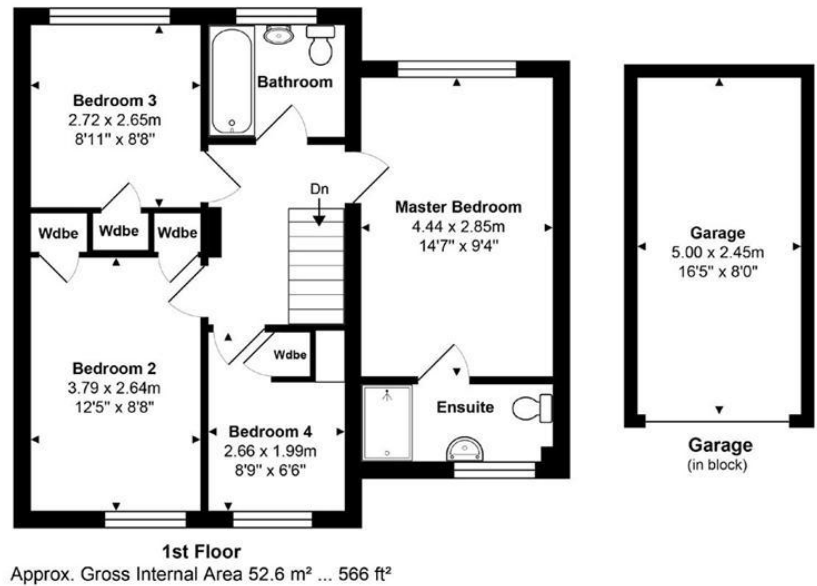
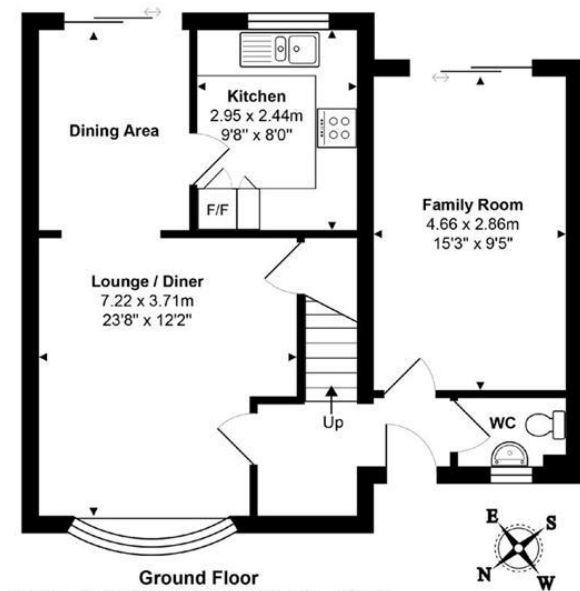
Outside

Garden

Panel fencing with rear access via gate, patio area with the remainder laid to turf, side access



FLOORPLAN



Total Approx. Gross Internal Area 104.9 m² ... 1129 ft² (excluding garage)

All measurements are approximate and for display purposes only. Not to scale.

Guildford Office
12c, Worplesdon Road, Guildford, GU2 9RW
01483 576300
info@hippsestateagents.co.uk