



Palace Court, Harrow, HA3 0SN

Cow & Co
LONDON



GUIDE PRICE £650,000 - £750,000

This beautifully presented family home offers over 1300 sq/ft of accommodation and also has a garage to the side which could also be converted subject to usual consents. located in this much sought after Cul-de-sac in Kenton the home is ideally located close to excellent schools including Uxendon Manor, Mount Stewart, Claremont and St Gregory's science college.

The accommodation comprises of an entrance hall, through lounge, guest cloakroom and a full width rear kitchen/diner extension. Whilst the first floor has a landing, three generous sized bedrooms all with quality fitted wardrobes, a shower room and separate wc.

There is a lawned front garden and a driveway in front of the garage. The rear garden is approximately 35ft x 25 ft.

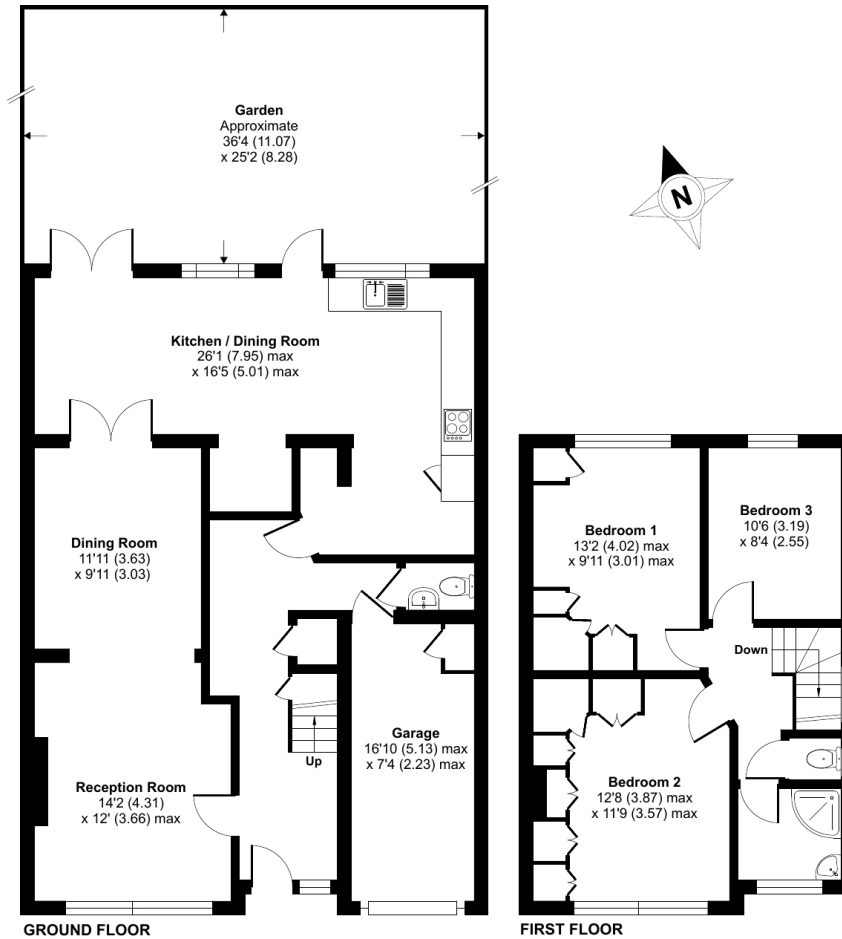
Viewing is highly recommended.



- Extended 3 bed semi
- Through lounge/dining room
- Full width rear extension
- Garage via own drive
- Beautiful condition
- Cul-de-sac location
- Close to Woodcock park and excellent schools
- Viewing highly recommended.

Palace Court, Harrow, HA3

Approximate Area = 1301 sq ft / 120.8 sq m
Garage = 120 sq ft / 11.1 sq m
Total = 1421 sq ft / 131.9 sq m
For identification only - Not to scale



Floor plan produced in accordance with RICS Property Measurement Standards incorporating International Property Measurement Standards (IPMS2 Residential). © nchecon 2024. Produced for Cow & Co Properties Ltd. REF: 1124654

Tel: 0208 065 0010
Email: thehub@cowandco-london.com
Web: cowandco-london.com

Agents note: All measurements are approximate and whilst every attempt has been made to ensure accuracy they are for general guidance only and must not be relied on. The fixture and fittings referred to have not been tested and therefore no guarantee can be given that they are in working order. Internal photographs are reproduced for general information and it must not be inferred that any item shown is included with the property.

Cow & Co

LONDON