

165 Heathfield Avenue

Dover

CT16 2PD

£200,000 FREEHOLD

DRAFT DETAILS...FOR SALE WITH BURNAP + ABEL...*** ATTENTION INVESTORS*** 2/3 Bedroom Terraced Home in the Heart of Dover - A Canvas for Your Creativity! Welcome to your future sanctuary nestled in a prime location in Dover! This 2/3 bedroom terraced house offers an incredible opportunity for those looking to make their mark on a property brimming with potential. With four levels of spacious living, this home is perfect for families, first-time buyers, or savvy investors eager to embrace the challenge of modernisation. Step inside and discover a flow that is both functional and inviting. The well-proportioned rooms provide ample space for comfortable living while awaiting your personal touch. Imagine transforming these areas into stylish retreats where you can unwind after a long day. The kitchen leads out to an expansive garden – a true gem in this urban setting! This great-sized outdoor space promises endless possibilities for relaxation and entertainment. With its convenient layout spread over four levels, you'll appreciate the potential to create individual zones: cozy bedrooms, a dedicated office space, or even a hobby room, Being offered to the market CHAIN FREE! Contact Burnap + Abel on 01304279107 to organise a viewing.



Lounge/Dining Room

21' 4" x 12' 7" (6.50m x 3.84m)

Shower Room

Kitchen/Lounge

21' 3" x 12' 6" (6.48m x 3.81m)

Utility Area

Bedroom One

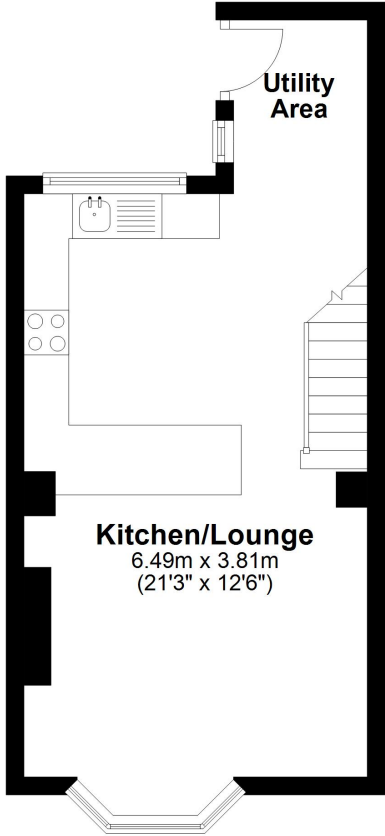
12' 5" x 10' 6" (3.78m x 3.20m)

Bedroom Two

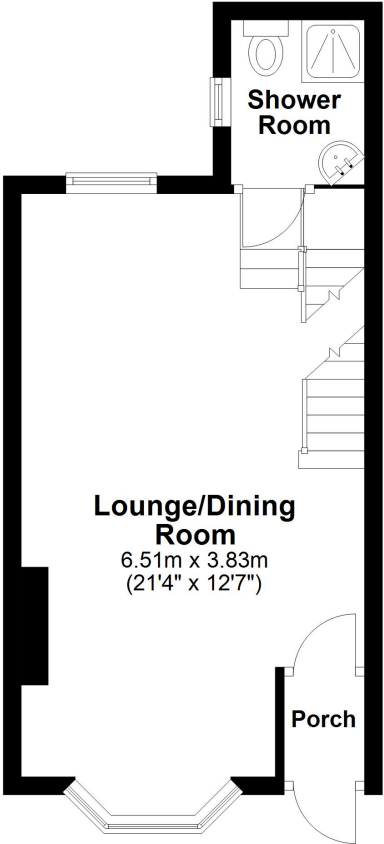
10' 6" x 7' 5" (3.20m x 2.26m)

Garden

Lower Ground Floor
Approx. 28.0 sq. metres (301.7 sq. feet)



Ground Floor
Approx. 28.0 sq. metres (301.7 sq. feet)



First Floor
Approx. 24.8 sq. metres (266.5 sq. feet)

