



Tudor House

Poynders End, Preston, Hitchin,
Hertfordshire, SG4 7RX
Guide Price £1,500,000

COUNTRY PROPERTIES
PART OF HUNTERS

Tudor House, located in the picturesque hamlet of Poynders End, is a stunning historical residence that seamlessly combines timeless elegance with modern comfort. This exquisite Tudor-style home offers a unique opportunity to own a piece of architectural heritage, featuring intricate period details, spacious living areas, and a charming exterior facade.

Bursting with original features such as exposed beams, fireplaces and beautiful leaded glass windows, parts of the property date back as far as the 15th century, but also incorporates more modern touches making a wonderful family home.

Set across two floors, the property includes a spacious and welcoming entrance hall with two separate reception rooms and a kitchen/breakfast room with utility. The three bedrooms are located on the first floor, all with their own en-suite bathrooms and the principal suite also benefitting from a dressing room overlooking the side garden

Tudor House is set within expansive, well-manicured grounds that offer both privacy, tranquillity and panoramic views across open countryside. The property includes a landscaped garden, ideal for relaxing or hosting outdoor gatherings and paddocks extending approximately 4.8 acre. Mature trees, flower beds, and a charming patio area further enhance the natural beauty of the surroundings. There are also various outbuildings including a former dairy, stables, store room and tack room.

Poynders End is on the edge of the Hertfordshire village of Preston which has a primary school, a cricket club and The Red Lion Pub which was the first community owned pub in the country. There are a range of country walks in all directions. For a wider range of amenities, the village is just 3 miles from Hitchin which has a range of bars, restaurants, and shops. There are three gyms and indoor and outdoor swimming pools, three local theatres and the market square hosts many events including street food evenings and specialist markets. Hitchin has a range of schools including Hitchin Girls' and Boys' Secondary Schools which are both rated outstanding by Ofsted. The A1(M) is 5 miles away and the M1 at Luton is 7 miles away.

Stunning historical property

- Original Tudor features
- Set on a plot of approx. 4.8 acres
- Various outbuildings
- Magnificent views across open countryside
- 3.7 miles, 9 min drive to Hitchin town centre (as per Google maps)
- 4.2 miles, 11 min drive to Hitchin main line train station (as per Google maps)







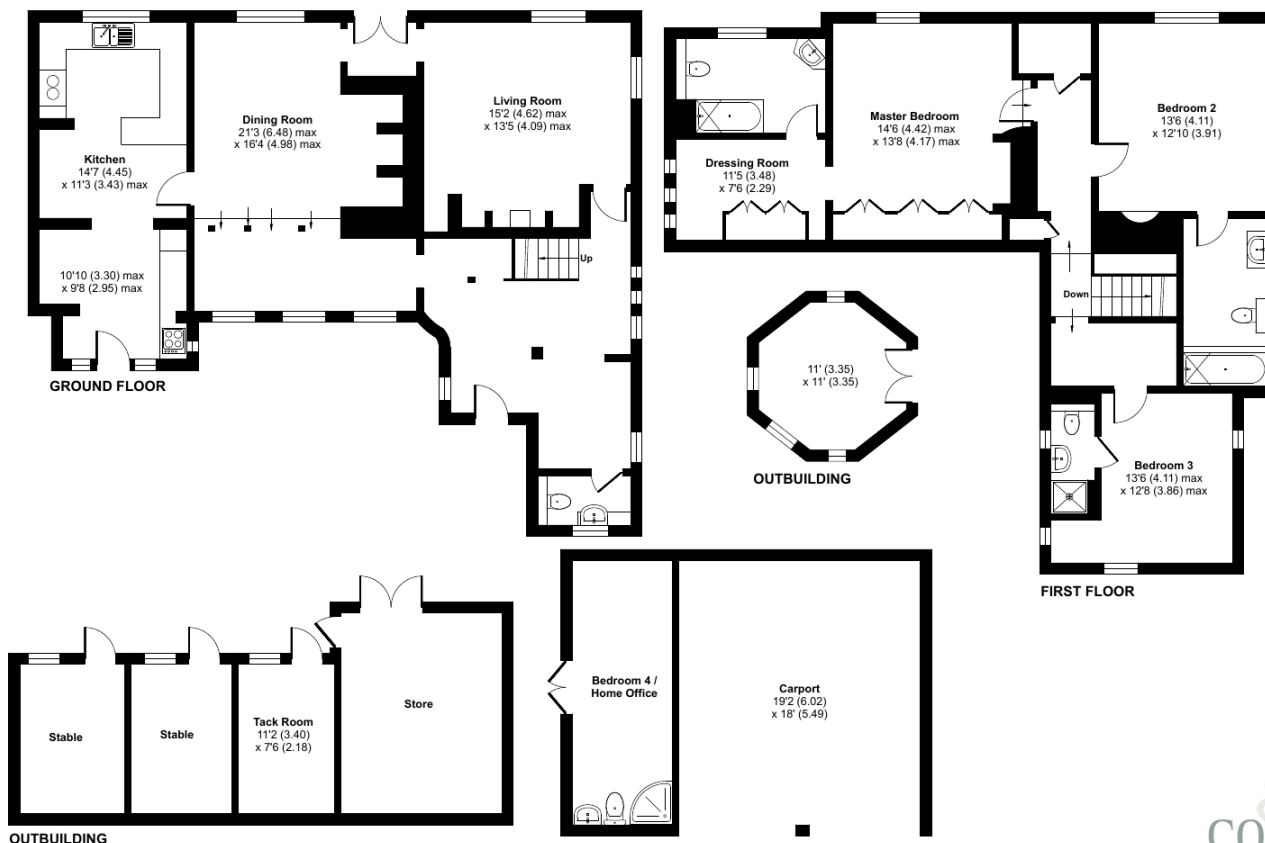


Approximate Area = 2190 sq ft / 203.4 sq m(exclude stables & carport & home office & store)

Outbuildings = 178 sq ft / 16.5 sq m

Total = 2368 sq ft / 219.9 sq m

For identification only - Not to scale



Floor plan produced in accordance with RICS Property Measurement Standards incorporating International Property Measurement Standards (IPMS2 Residential). © nichecom 2023. Produced for Country Properties. REF: 1002288



All measurements are approximate and quoted in metric with imperial equivalents and for general guidance only and whilst every attempt has been made to ensure accuracy, they must not be relied on. The fixtures, fittings and appliances referred to have not been tested and therefore no guarantee can be given and that they are in working order. Internal photographs are reproduced for general information and it must not be inferred that any item shown is included with the property. For a free valuation, contact the numbers listed on the brochure.

Viewing by appointment only

Country Properties | 6, Brand Street | SG5 1HX

T: 01462 452951 | E: hitchin@country-properties.co.uk

www.country-properties.co.uk





COUNTRY PROPERTIES

PART OF ~~H~~HUNTERS®
