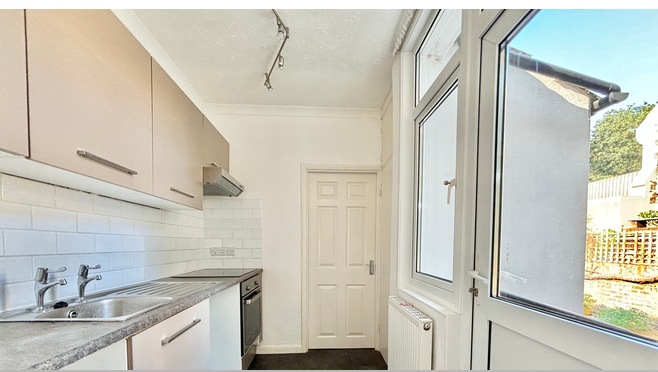




24A Wickham Avenue, Bexhill on Sea, East
Sussex, TN39 3EN

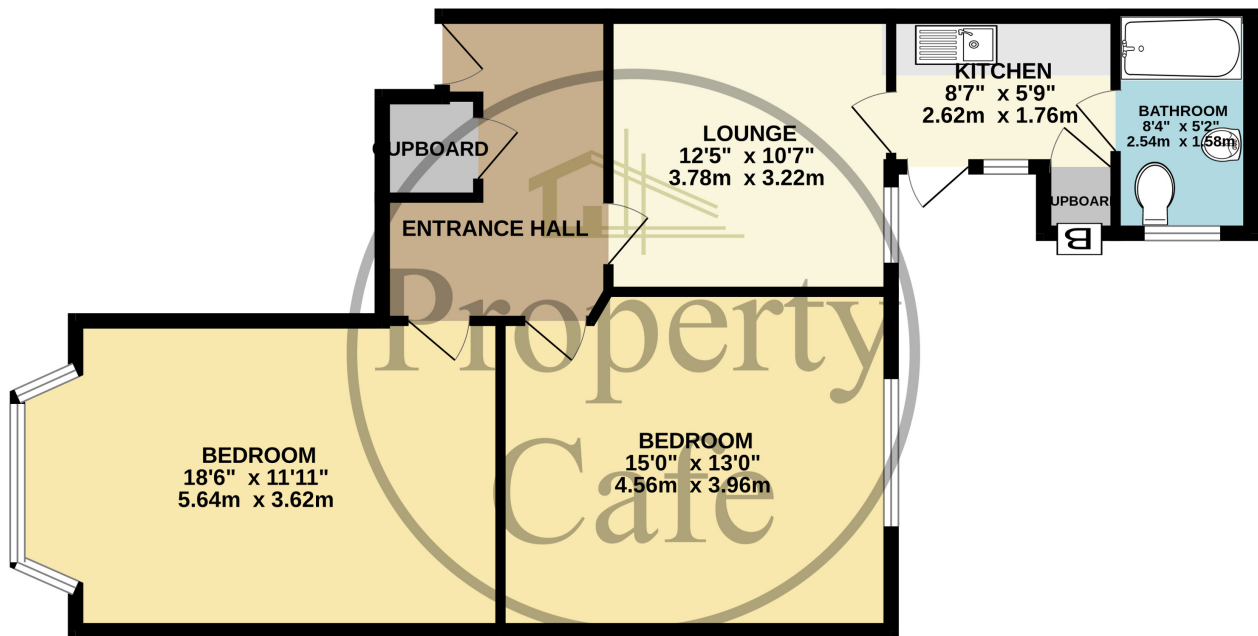
£229,950



- Two Bedroom Garden Flat For Sale
- Own Private Entrance
- Modern Fitted Kitchen
- Two Double Bedrooms
- Modern Fitted Bathroom.
- Private Rear Garden
- Gas Central Heating
- Double Glazing
- Well Presented In Neutral Colour Schemes Throughout
- Opposite Egerton Park & Close To Seafront
- Sought After Town Centre Location
- Sold With No Onward Chain
- Viewing Highly Recommended



GROUND FLOOR
708 sq.ft. (65.7 sq.m.) approx.



TOTAL FLOOR AREA : 708 sq.ft. (65.7 sq.m.) approx.

Whilst every attempt has been made to ensure the accuracy of the floorplan contained here, measurements of doors, windows, rooms and any other items are approximate and no responsibility is taken for any error, omission or mis-statement. This plan is for illustrative purposes only and should be used as such by any prospective purchaser. The services, systems and appliances shown have not been tested and no guarantee as to their operability or efficiency can be given.

Made with Metropix ©2024