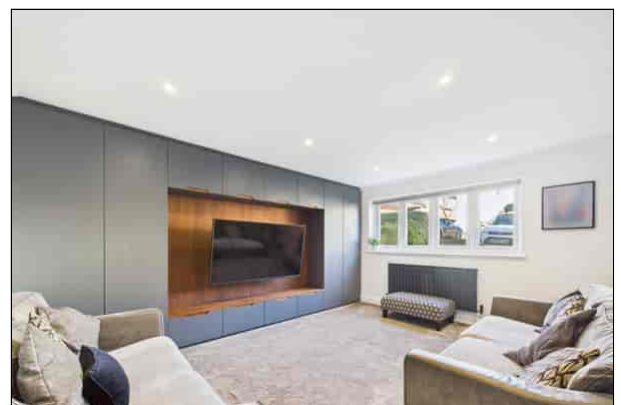




Lanthorne Road, Broadstairs

£585,000

- Four Bedroom Semi-Detached Family Home
- Off Road Parking for Two Vehicles
- Stunning Loft Conversion
- 23'9" Principal Bedroom
- High Standard Of Finish Throughout
- 20'9" Kitchen/Diner with Integrated Appliances
- Welcoming Entrance Hall
- South Facing Rear Garden
- Spacious Living Accommodation Over Three Floors
- Sought after Area
- Close to Stone Bay Beach



Terence Painter

ESTATE AGENTS