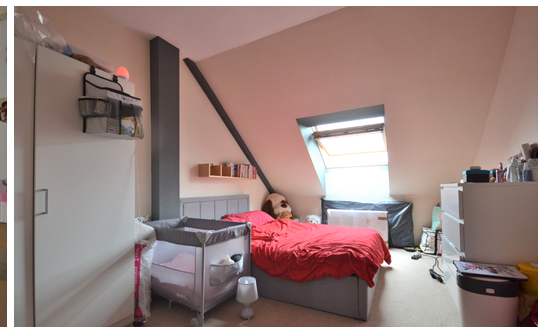




NEWSON & BUCK
ESTATE AGENTS



Flat 362 The Maltings, Swiss Terrace, King's Lynn, Norfolk PE30 2QS £109,995

A two bedroom apartment located within walking distance of King's Lynn Town Centre. The accommodation consists of spacious entrance hallway, kitchen, living room, two bedrooms & bathroom. The property benefits from double glazing and one parking space. This apartment is situated close to the beautiful 'Walks' park, The Town Centre and Kings Lynn further benefits from a main line rail link into Cambridge and London King's Cross.

Entrance Hallway

UPVC front door opening in to entrance hallway, fitted carpets, one radiator, cupboard,.

Living Room

10' 06" x 19' 09" (3.20m x 6.02m) Fitted carpets, one radiator, one double glazed Velux style window.

Kitchen

10' 04" x 10' 04" (3.15m x 3.15m) Laminate flooring, fitted kitchen units, electric over and hob, extractor, one double glazed window, space for washing machine and fridge freezer.

Bedroom One

10' 04" x 19' 07" (3.15m x 5.97m) Fitted carpets, one radiator, one Velux style window.

Bedroom Two

10' 04" x 10' 00" (3.15m x 3.05m) Fitted carpets, one Velux style window, one radiator.

Bathroom

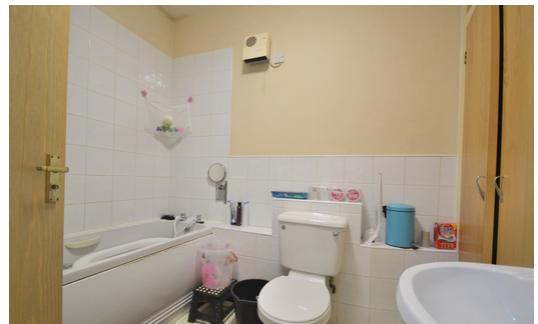
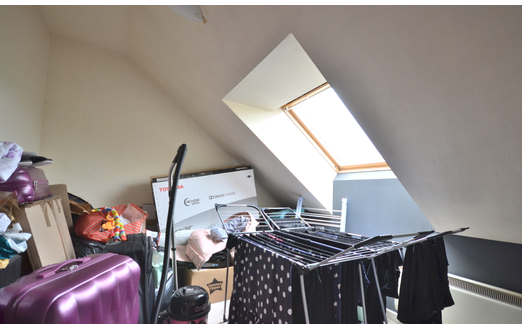
6' 11" x 7' 08" (2.11m x 2.34m) Low flush W/C, pedestal sink, bath tub, vinyl flooring, cupboard space.

EPC Rating - D

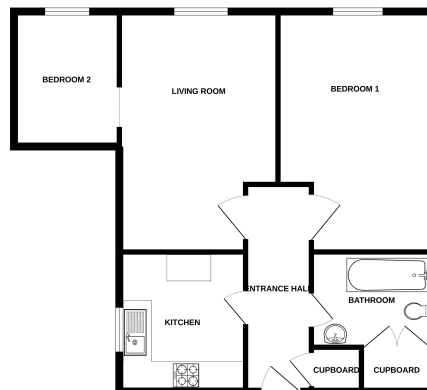
Council Tax Band A

Leasehold

We have been informed that the flat currently has 78 years left on the lease. 99 year lease was issued from June 2001. The service charge is £850 with a ground rent of £150



GROUND FLOOR



While every effort has been made to ensure the accuracy of the description contained herein, the advertiser makes no representation, warranty or guarantee as to the accuracy of the information contained herein. The advertiser is not responsible for any loss or damage caused by reliance on the information contained herein. The advertiser is not responsible for any loss or damage caused by reliance on the information contained herein. The advertiser is not responsible for any loss or damage caused by reliance on the information contained herein.