



Marshalls Cottage, Chappel Road, Great Tey, Colchester, Essex. CO6 1JR.

** Guide Price £600,000 to £625,000 ** We present to market a rare find, a spacious and excellent example of a four bedroom detached cottage, occupying a pleasant position backing on to fields in the quaint village of Great Tey. Great Tey is a peaceful and picturesque village and offers an idyllic village lifestyle, housing a reputable public house 'The Chequers', St Barnabas Church of which stands proudly in the middle of the village, its tower perhaps the finest example of Romanesque architecture in Essex. It is also within moments of Gt.Tey COE primary school and The Barn Brassiere. All of these beautiful surroundings, are a stones throw from this excellent home, of which offers a wealth of both living and bedroom accommodation throughout.

- Favourable Gt. Tey Village Location, West of Colchester
- Village Community & Excellent Primary School Close By
- Backing Directly Onto Open Fields
- Versatile Accommodation Spread over Two Floors
- Driveway Providing Parking For Multiple Vehicles
- An Exceptional Private Garden
- Four Generous Bedrooms
- Large Living Room, Fitted With Shutters & Log Burner
- Fully Open Plan Kitchen/Dining Area With French Doors To Garden
- A Prime Example Of A Detached Cottage



Property Details.

Ground Floor

Entrance Hallway

Main door into hallway, storage cupboards, radiator, door to:

Cloakroom

Low level W.C, vanity wash basin, radiator, window to front aspect.

Kitchen/Dining Area



22' 0" x 17' 2" (6.71m x 5.23m) UPVC windows to side aspect, French doors to garden, UPVC single door to side, full range of base and eye level units, cupboards and work surfaces, integrated appliances, island/breakfast bar area hanging pendant lighting, tiled effect flooring, space for fridge/freezer, spot lighting, door to:

Snug/Study



11' 0" x 8' 10" (3.35m x 2.69m) UPVC window to rear aspect, measured to fit shutters, inset book case/shelving, radiator, spot lighting.

Living Room



24' 7" x 20' 0" (7.49m x 6.10m) Dual aspect windows to front, side and rear aspect, radiator, wall panelling, log burner, wood flooring.

First Floor

Landing

17' 1" x 14' 4" (5.21m x 4.37m) UPVC floor to ceiling window to rear aspect, radiator, door to:

Bedroom One



21' 5" x 10' 10" (6.53m x 3.30m) Built in sliding wardrobes, walk in wardrobe, radiator, UPVC window to side aspect, door to:

Property Details.

En Suite



Low level W.C, vanity wash basin, shower cubicle, towel rail.

Bedroom Two



12' 4" x 11' 2" (3.76m x 3.40m) Built in wardrobes, radiator, UPVC window to front aspect.

Bedroom Three

11' 5" x 9' 2" (3.48m x 2.79m) UPVC window to front aspect, built in wardrobe, radiator.

Bedroom Four

9' 11" x 8' 10" (3.02m x 2.69m) UPVC window to side aspect, radiator, inset wardrobes.

Bathroom



10' 10" x 8' 2" (3.30m x 2.49m) UPVC window to side aspect, his and hers sinks, shower cubicle, roll top bath, spot lighting.

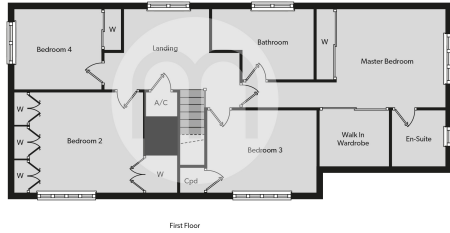
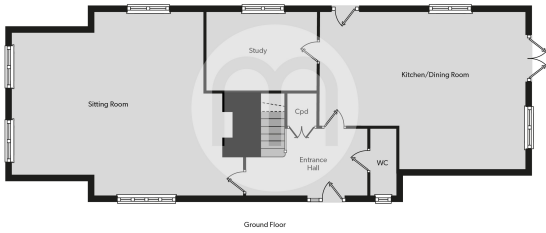
Outside



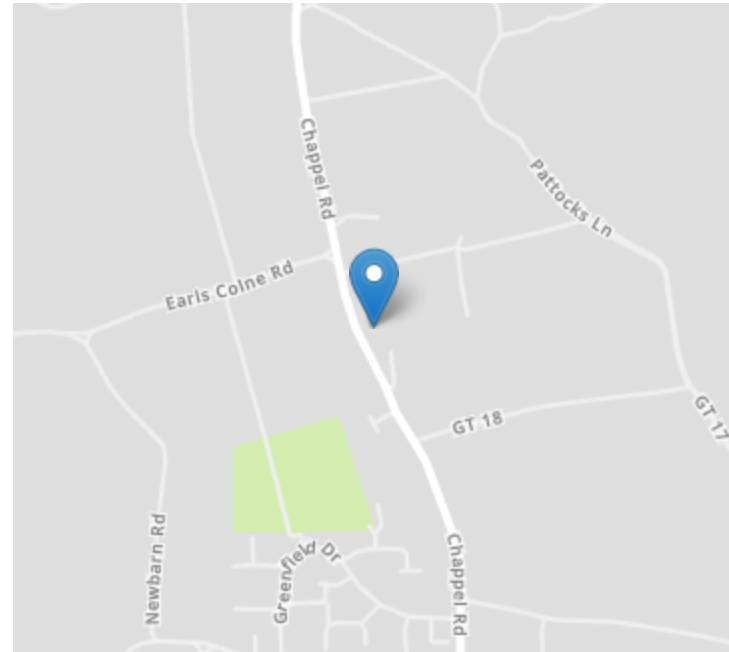
Outside the property occupies an impressive plot with the garden measuring over 100ft as is enclosed by a variety of bushes, shrubs and trees. The garden is predominantly laid to lawn, also featuring a landscaped area which is laid to patio, ideal for outside dining or entertaining. Gated access then wraps around to the front of the property offering a driveway for multiple vehicles.

Property Details.

Floorplans



Location



Energy Ratings

We have not carried out a structural survey and the services, appliances and specific fittings have not been tested. All photographs, measurements, floor plans and distances referred to are given as a guide only and should not be relied upon for the purchase of carpets or any other fixtures or fittings. Gardens, roof terraces, balconies and communal gardens as well as tenure and lease details cannot have their accuracy guaranteed for intending purchasers. Lease details, service ground rent (where applicable) are given as a guide only and should be checked and confirmed by your solicitor prior to exchange of contracts.